

June 21 to July 19, 1992
St. Olaf College Campus ♦ Northfield, Minnesota

LUTHERAN '92 SUMMER MUSIC

The National Lutheran
Music Camp

An affordable, comprehensive
camp for talented high
school musicians.



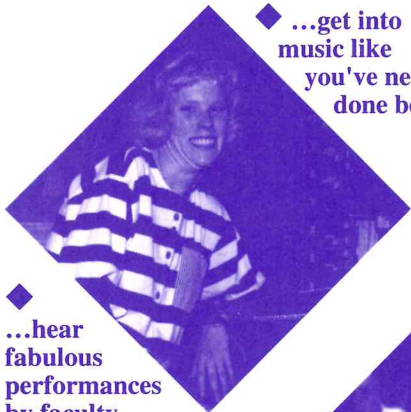
Send for New LSM Video
Call (402) 474-7177
for free loan

Make Your Music Live!

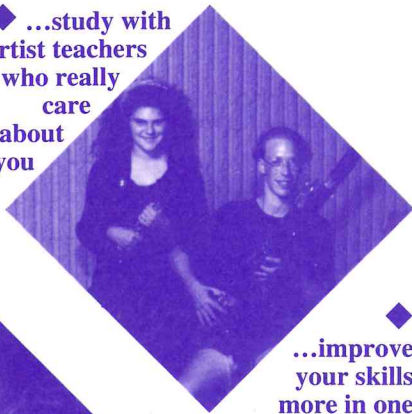
LUTHERAN SUMMER MUSIC

is a great place for you to...

◆ ...get into music like you've never done before



◆ ...study with artist teachers who really care about you



◆ ...hear fabulous performances by faculty artists, guest artists, and other students – and also perform yourself

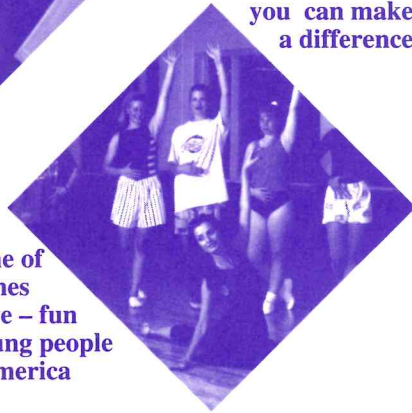


◆ ...improve your skills more in one month than you might through an entire year

◆ ...make new friends who are also into music



◆ ...play in ensembles where you can make a difference



◆ ...enjoy some of the best times you'll ever have – fun with Christian young people from across America



Dear Student,

Lutheran Summer Music is a place for teenagers who really love music—a place to grow in many ways but especially in music.

Everything at the camp is designed for growth: you can see what you like to live on a college campus...you can have the fun of making daily progress in your practice, lessons, and in ensemble rehearsals...you will feel encouraged to achieve your potential whatever your present level in music...you can discover new and old ways to use your music in worship...you can even study new instruments and learn new subjects taught in stimulating ways.

Look over this brochure to learn the full story. Check out our new 3-minute video to hear music from camp and listen to students singing it like it really is.

Think it over. LSM may be just the place for you this summer. Don't miss what could be the experience of a lifetime!

Carlos R. Messerli



Carlos R. Messerli
Executive Director
Lutheran Music Program, Inc.

Dear Musician,

LSM sounds like an exciting opportunity for you, please get in touch with me and our staff. We will be happy to answer your specific questions about such things as:

- the fine teachers and directors you would have at LSM,
- special camp features of greatest interest to you,
- the kind of daily schedule you would have,
- what you need to do to apply,
- how financial aid can make LSM affordable for you and your family,
- how to arrange your travel to and from camp,
- any special concerns you, your parents, or your teachers might have

Please write or call (collect) at any time, including evenings and weekends, (402) 474-7177. I will do everything I can to help you solve problems that you might enjoy the wonderful growth opportunities at Lutheran Summer Music.

John Lunde



John Lunde
Director of Admissions
and Financial Aid

A Message from St. Olaf College

This summer St. Olaf College will welcome to its campus Lutheran Summer Music – 1992. I am pleased to note that this outstanding summer program for the education of young musicians held its first month-long camp ten years ago at St. Olaf in 1982. Since then it has appeared on six other Lutheran college campuses. I encourage all who love our Lutheran heritage of music to support the music camp, and I certainly recommend the most musically talented young men and women of high school age apply to attend Lutheran Summer Music – 1992. They could thereby take advantage of the opportunity to further their musical education and become acquainted with the St. Olaf campus.

Melvin D. George

Melvin D. George
President



Ten years ago a group of far-sighted Lutheran educators and musicians conceived a program of high quality in music that would encourage youth of high school age to develop their God-given talent and to strengthen and extend the Christian tradition of fine musical performance in worship.

Aid Association for Lutherans supported a 1981 feasibility study that confirmed the strength of the concept. With seed money from AAL, an independent policy-making board of directors was formed and an executive director engaged.

Month-long Lutheran Summer Music camps have been held annually since 1982 on various college campuses, such as St. Olaf (Minn.), Valparaiso (Ind.), Luther (Iowa), Wittenberg (Ohio), Augustana (Ill.), Concordia (Minn.), and Augustana (S. Dak.). Between 150 and 200 students from about 35 states are regularly attracted to the camp.

The program is supported by fees from participants, grants from organizations and donations from many individual LMP PARTNERS, who especially recognize the need for funds for scholarships and financial aid for worthy students.

LMP Board of Directors:

Mr. Raymond G. Avischious, *President*
Rolling Meadows, Illinois

Mr. Dieter Nickel, *Vice President*
Merrill, Wisconsin

Mrs. Darlene Swanson, *Secretary*
Omaha, Nebraska

The Rev. Victor O. Mennicke,
Treasurer, Sarasota, Florida

The Rev. Dr. August Bernthal
Winter Haven, Florida

Mrs. Betty Franke, Addison, Illinois

Dr. Arvin Hahn, Zionsville, Indiana

Mrs. Ewald H. Mueller,
St. Louis, Missouri

Dr. Carl F. Schalk, River Forest, Illinois

The Rev. Dr. Lloyd Svendsbye,
Sioux Falls, South Dakota

Dr. Frederick H. Telschow,
Valparaiso, Indiana

“What others have said...”



“It almost seems as if the greatest years of historic Lutheran music are being re-enacted in Lutheran Summer Music.”

—Dr. Eugene Helm, musicologist,
University of Maryland

“A marvelous camp...an ideal emphasis on chamber music...wonderfully gifted and cooperative young people.”

—André Michel Schub, pianist,
LSM guest artist

“Having music in worship adds so much, which is, to me, what this camp is all about. I will never look at music and worship as two separate things.”

—LSM camper

“As a performing musician I can say that I am unaware of any other music program that accomplishes what Lutheran Summer Music does...The “Sounds of Summer” Festival weekend was an absolute knock-out!”

—parent of an LSM camper



utheran Summer Music offers a rewarding immersion in required and optional musical activities.

Concerts and Recitals – Participation in attendance at all musical performances and camp is required as fundamental to the study and enjoyment of music of all eras and styles.

Lessons – Individual instruction is offered on all orchestral and band instruments, voice, piano, and organ. All students take two 25-minute lessons each week in their first instrument or in voice. In addition, many students choose to take 2 optional lessons per week in a second instrument or in voice.

Small Ensembles – Small musical ensembles are a hallmark of the music program. All students belong to chamber ensembles (string quartets, brass and woodwind quintets, keyboard and vocal ensembles, etc.) at appropriate levels of placement as determined by auditions and subsequent progress. Ensembles normally rehearse four days each week. **Jazz Ensemble** and **Collegium musicum** (historical instruments) are available to students having special interest and aptitude.

Large Ensembles – All students (including pianists and organists) are assigned to choir, symphony orchestra, concert band, string ensemble, or flute choir determined by auditions. While every effort will be made to honor student preferences for ensembles, placement is determined by auditions, schedules, and available requirements. Large groups rehearse five days each week.

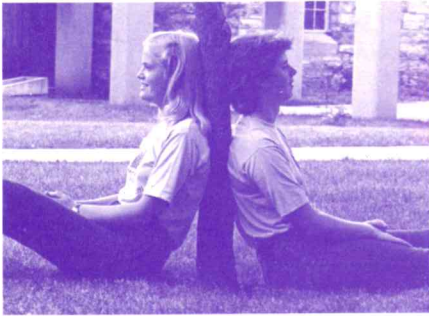
Music Listening and Theory – To develop musicianship and musical perspective, all students study works of great composers and principles of theory. Placement tests will determine Listening and Theory section assignments. Advanced students may elect Composition class. Music Listening meets twice and Theory and Composition classes meet three times each week.

Enrichment Areas – Enrichment Areas provide a broadened artistic experience in a workshop setting. Students may select an area based on their interest and previous experience from among the following: musical theatre, drama, dance, and art. Specific offerings depend on registration. Classes meet three days each week.

Church Music – Worship provides a natural outlet for the performance of music by Christians. Campers learn much about church music just by participating in daily worship and, for some, by singing in the Chapel Choir. Classes in Church Music are offered twice weekly for those who want to learn more about contemporary music leadership in church. Certificates of Participation are awarded to those completing designated requirements.

Conducting – Instruction in conducting instrumental and vocal ensembles is offered optionally in two classes each week.

Concerto Performance Auditions – All wind, string, and keyboard instrumentalists accepted as students in the camp are eligible to audition without extra charge for a performance with the "Sounds of Summer" Orchestra during the concluding Festival of the camp. To enter, students must submit a separate audition tape (received by LMP by June 1), which is to be a movement of a concerto chosen from the standard repertoire. Finalists for the live audition at camp will be selected from the tape auditions. Write for more information and an entry form or check item No. 14 on page 11.



Campus – St. Olaf College is located 40 miles south of the Twin Cities in Northfield, Minn., on a wooded hill known as Manitou Heights. The pleasant 350-acre campus features 29 major buildings, including splendid music, worship, recreation and food service facilities. St. Olaf is located just six miles off Interstate 35 and can be easily reached by air, bus, and rail lines to the Twin Cities.

Housing and Meals – Students, counselors, faculty, and staff live as a community on campus. Students are housed in double rooms in modern dormitories with linen and towel service and laundry facilities. Attractive, nutritionally balanced meals are served cafeteria style. Some medically approved diets may be available under special circumstances. Food preparation is not allowed in the living quarters.

Counseling – The Chaplain, the Dean of Students, and mature, Christian dormitory counselors are available to assist students to make the most of the many opportunities for personal and musical growth and for individual counseling when needed. All teachers stand ready to assist students in matters relating to their musical progress.

Worship – Christian worship is at the heart of daily camp life. All campers will be encouraged to take advantage of the daily opportunities to participate and enjoy the contribution made by music in worship, especially at Evening Prayer,

which is preceded by brief **Abendmusik** recitals. Weekly Holy Communion is celebrated on campus. Other worship experiences are also available to campers in Northfield.

Social Life and Recreation – The camp offers daily opportunities to enjoy healthful recreation and an active social life. Programs, parties, and dances are scheduled each week. Both supervised and free recreation are offered. Available activities include swimming, basketball, running, volleyball, softball, tennis, aerobics, and weights.

Health Service – A qualified professional is available for health services on a daily basis. Nearby hospitals provide emergency service.

Camp Regulations – All students admitted into the program are expected to abide by the code of conduct and dress that has been adopted for the welfare and benefit of all campers. Admitted students will be sent the *LSM Handbook* outlining camp regulations. In brief: 1. Students may not possess or use alcoholic beverage, tobacco, or unauthorized drugs; 2. Modest and neat summer sports clothes are considered appropriate; 3. Students may not leave the camp without permission; 4. Automobiles and motorcycles are not to be operated by students during the camp; bicycles are not needed; 5. While visitors are always welcome in camp, student schedules should not be interrupted.



Artist teachers and directors will again provide strong musical leadership at Lutheran Summer Music – 1992. Following is a partial list:

- Steven Amundson**, St. Olaf College, Northfield, MN, *orchestra*
James Boitos, Illinois State Univ., Normal, *saxophone*
Jary Bordner, St. Paul Chamber Orchestra, MN, *trumpet*
Paul Bouman, Oak Park, IL, *choir, voice*
Randall Davidson, Minneapolis, MN, *composition*
Charles Gray, St. Olaf College, Northfield, MN, *viola, violin*
Gregory Helseth, Omaha Symphony, NE, *Fr. horn*
Paul Hoffman, Fremont, NE, *chaplain*
Martin Jean, Valparaiso Univ., IN, *organ*
David Johansen, St. Olaf College, Northfield, MN, *low brass*
Craig Johnson, Univ. of Texas, Austin, *choir, voice*
Katherine Borst Jones, Ohio State Univ., Columbus, *flute*
Terilee Klemp, Augsburg College, Minneapolis, MN, *oboe*
Michael Krueger, Champaign, IL, *trumpet*
Niane McCloskey, Kent State Univ., OH, *flute*
Lucinda Marvin, Minneapolis, MN, *violin*

Victor H. Mattfeld, College of Staten Island, CUNY, *Collegium musicum*
Movère Woodwind Quintet, *LSM resident ens.*

- David Neely**, Univ. of South Dakota, Vermillion, *violin*
Frederick Nyline, Luther College, Decorah, IA, *band*
Omega String Quartet, *LSM resident ens.*
Ann Pesavento, Gustavus Adolphus College, St. Peter, MN, *bassoon*
Russell Pesola, Concordia Coll., Moorhead, MN, *band*
Gregory Peterson, Iowa City, IA, *music literature, organ*
John Pfautz, Augustana College, Rock Island, IL, *voice*
Robert Satterlee, Humboldt State Univ., CA, *piano*
A. DeWayne Wee, St. Olaf College, Northfield, MN, *piano*
Theo Wee, St. Olaf College, Northfield, MN, *piano, organ*
George Work, Iowa State Univ., Ames, IA, *cello*
Sarah Young, Columbus, OH, *clarinet*
- Administration**
- Carlos R. Messerli**, Lincoln, NE, *Executive Director*
Scott C. Weidler, Lancaster, PA, *Summer Program Director*
Cheryl Hoth, Chicago, IL, *Dean of Students*

Special Events

Lutheran College Fair – An opportunity for students to get acquainted with the musical and other educational offerings of a score of Lutheran colleges. It features opportunity for personal interaction with college admissions counselors or musicians.

Music-Drama-Art Caravan – Separate excursions are planned to sample the rich cultural life of Minn. Twin Cities and to perform in area churches. Admission to museums, concerts and/or plays will be arranged as available.

“Sounds of Summer” Festival

The ideal time for guests to visit the camp is during the “Sounds of Summer” Festival (July 14-19) with its many concerts, recitals, displays, and worship services. Information about tickets, housing, and meals is available from the Lutheran Music Program office.

Faculty – Distinguished faculty members have set high standards for quality of instruction and personal concern for students. The LSM faculty of recent years has included:

Bruce Ammann, Augustana, SD, *band*; **Eldon Balko**, Valparaiso U., IN, *voice*; **Robert Bergt**, Valparaiso U., IN, *orch.*; **Donald Busarow**, Wittenberg, OH, *organ, comp.*; **Bonnie Buss**, Augustana, IL, *voice*; **Rene Clausen**, Concordia, Moorhead, *choir*; **Mihai Craioveanu**, Bradley U., IL, *violin*; **Mark Dannenbring**, Tunghai U. Taichung, Taiwan, *flute*; **Douglas Diamond**, Luther Coll., IA, *orch.*; **Frederick Ebbs**, Indiana U., (decd.), *band*; **Karle Erickson**, Gustavus Adolphus, MN, *choir*; **Steve Erickson**, Omaha Symp., NE, *trumpet*; **Frederick Fennell**, Miami, FL, *band*; **Kirkland Ferris**, Minn. Orch., Mpls., *bassoon*; **Roger Gard**, Pacific Lutheran, WA, *band*; **Betty Gehring**, Valparaiso U., IN, *viola*; **Philip Gehring**, Valparaiso U., IN, *organ, comp.*; **Susan Hegberg**, Susquehanna U., PA, *organ*; **Sigrid Johnson**, St. Olaf Coll., MN; *choir, voice*; **Ann Jones**, Robert Shaw Chorale, Atlanta, GA, *choir, voice*; **James Klein**, Calif. St. U., Stanislaus, *band*; **Sharon Kleinhuizen**, Augustana, IL, *piano*; **James Lambrecht**, Augustana, IL, *band*; **Leland Lillehaug**, Augustana, SD, *band*; **Daniel McKelway**, Stoneham, MA, *clarinet*; **Christelle Menth**, Concordia, NE, *piano*; **Daniel Moe**, Oberlin Conserv., OH, *choir*; **Donald Morrison**, Augustana, IL, *choir*; **Movère Woodwind Quintet**: *LSM resident ens.*; **Weston Noble**, Luther Coll., IA, *band, choir*; **Erling Olofsson**, Mølndals Musikskola, Sweden, *orch., bassoon*; **Omega String Quartet**: *LSM resident ens.*; **Theresa Patton**, Acton, MA, *flute*; **Walter Pelz**, Bethany, Lindsborg, KS, *organ, comp.*; **David Saladino**, Cal. State, Fullerton, *choir*; **Mary Helen Schmidt**, Augustana, SD, *piano, organ*; **Frederick Telschow**, Valparaiso U., IN, *choir*; **Thomas Trimborn**, Valparaiso U., IN, *band*; **Dale Warland**, Dale Warland Singers, MN, *choir*.

Guest Artists – Many guest artists have illuminated the stage of Lutheran Summer Music, both in concerts and in master classes with students:

Arden Trio, 1983 N.Y.C. Concert Artist Competition Winner: Thomas Schmidt, *piano* Suzanne Ornstein, *violin*; Clay Ruede, *cello*, **Capitol Brass Quintet**, St. Paul,

Minn., **Chicago Chamber Brass**, Chicago, Ill., **Dallas Brass**, Dallas, Texas, **Robert Schumann Chamber Orchestra**, from Robert Schumann Institute in Dusseldorf, Germany, **Valparaiso Faculty Jazz Trio**, Valparaiso Univ., Ind., **John Brandstetter**, *baritone*, internationally active opera soloist, **Ruebén González**, *violin*, Associate Concert-master, Chicago Symphony Orchestra, **Valery Grokhovsky**, *piano*, award winner, All-Union contest in Sverdlovsk, USSR, and International Bousoni contest in Boltzano, Italy, **Irene Gubrud**, *soprano*, 1980 Naumberg International Voice Competition Winner, **Elizabeth Holleque**, *soprano*, 1984 National Metropolitan Opera Winner, with **Earl Buys**, *piano*, N.Y., **Leopold LaFosse**, *violin*, and **Kenneth Amada**, *piano*, Univ. of Iowa, **Theodore Lettvin**, *piano*, head, piano department, Univ. of Michigan, **Daniel McKelway**, *clarinet*, 1984 Young Concert Artists International Auditions Winner; 1989 recipient, Avery Fisher Career Grant, **Paul Manz**, *organ*, Lutheran School of Theology, Chicago, **Michael Riley**, *bass-baritone*, nationally prominent opera and concert soloist, **André-Michel Schub**, *piano*, winner, 1974 Naumberg International, 1977 Avery Fisher, and 1981 Van Cliburn piano competitions, **Jonathan Shames**, *piano*, winner, 1982 Silver Medal, Moscow Tchaikovsky Competition, **Ruth Slenczynska**, *piano*, Southern Illinois University, Edwardsville, Ill., **Philip Smith**, Co-prin. *trumpet*, N.Y. Philharmonic; **William Scarlett**, Ass't Prin. *trumpet*, Chicago Symphony Orch. with **Paul Bouman**, *organ*, Chicago.



Dallas Brass

Music Teachers, Directors, Youth Leaders, and Students: A new and inspiring 10-minute VHS videotape describing Lutheran Summer Music and its impact on students is available on free loan. Other LSM audio and video tapes are also available for purchase or loan. Please write or call (collect) LMP to order.

Preference in admission is given to those students of high musical ability who have demonstrated a lively interest in the affairs of their church and school and who have the capacity to work well with other students and adults. **Total enrollment will be limited and quotas of admission have also been set** for each vocal and instrumental area to achieve the best program or all who are admitted and to maintain a balance of ensemble membership. Some quotas are filled early. To receive full consideration for both acceptance and financial assistance, applications must be received by Lutheran Music Program by **June 1. Preference will be given to the earliest and most qualified applicants.** (Note: To facilitate early registration, lower Program fees are charged for applications postmarked by April 1 (save \$100) and May 1 (save \$50).

As soon as an application has been evaluated, a letter of acceptance or non-acceptance will be sent. If a student is not accepted, an **alternate status** may be assigned pending subsequent openings. A student may be admitted conditionally when the quota for the student's "first" instrument (or voice) has been filled or when audition tape performance suggests difficulty in meeting camp goals.

All fees deposited will be returned to alternates by June 15 if they have not been accepted as students. An alternate may make written withdrawal by June 1 if not accepted as a camper. An applicant accepted conditionally who does not wish to attend camp under the conditions offered by the Program may obtain a full refund by submitting a letter of withdrawal.

Application Procedure

For an applicant to be considered for admission, Lutheran Music Program must receive 1 of the following items by June 1: (Applicants may send in items 1 & 2 while auditioning for items 3,4, and 5.)

Complete *application form* signed by **both** student and parent or guardian (All students)

Payment of \$50 *First Installment*; see p. 1 (All students)

Cassette tape recording(s); see following information (All students)

Musical recommendation from a music teacher or director regarding the student's ability to profit from intensive individual music study and group performance (few students only)

Personal recommendation from a pastor, adult leader or teacher, in a non-music area evaluating the student's maturity and ability to adjust to the requirements of living in a month-long summer camp environment (few students only)

Tape Audition Information

All students must submit with their appli-

cations a **separate** cassette tape of performance on **each** instrument (or voice) offered for either lessons or for ensemble membership. Note: Keyboard students are expected to participate in a large ensemble; therefore (for placement purposes only) they must submit a second tape in voice or in another instrument.*

2. Length of each recording should not exceed 15 minutes.

3. Music to be performed is the choice of the student, but the following should be included:

- Scales, exercises, or vocalizes
- One or two (accompanied) solo compositions or hymn melodies (vocalists)
- One orchestra, band, or chorus part, or hymn voice-part.

4. When recording, the student should clearly announce: a) his or her name, b) name of exercise or composition, c) name of composer

5. Each cassette and cassette container must be labeled with student's name and address, name of instrument or voice, and list of pieces performed. Tapes will be returned.

Note: personal auditions will also be given each student upon arrival on campus.

Less experienced singers, auditioning for ensemble only, include on their voice tape: a. One-octave scales (one high, one low) sung on "lah," b. a hymn melody (with accompaniment), c. a hymn voice-part that is not the melody (with accompaniment.)

Mailing Address

Before June 10
Lutheran Music Program, Inc.
2225 Washington Street
Lincoln, NE 68502
Phone: (402) 474-7177

From June 11 through July 23
Lutheran Music Program, Inc.
St. Olaf College
Northfield, MN 55057
Phone: (507) 646-6262

The actual cost of offering Lutheran Summer Music-1992 will be nearly \$3,000 per student. Automatic scholarships of \$560 from funds supplied Lutheran Music Program by Aid Association for Lutherans and \$850 from Lutheran Music Program and the generous donors participating in the LMP PARTNERS program reduce this amount to the **Program Fee of \$1,590.**

The **Program Fee** includes tuition for classes, lessons in one instrument or voice, rehearsals, admission to performances, meals, a shared dormitory room, and use of most campus recreational facilities. It does not include personal spending money, fee for optional enrichment area or additional lessons, local transportation to or from campus, off-campus excursion costs, or required group emergency health and accident insurance.

Program Fee – \$1,590.00

LSM Alumni – Application postmarked by February 15	\$1,450.00
All Students – Application postmarked by April 1	\$1,490.00
All Students – Application postmarked by May 1	\$1,540.00
All Students – Application postmarked after May 1	\$1,590.00

Program Fee – Schedule of Payments

First Installment of the Program Fee must accompany all applications. (In case of cancellation by the student, \$25 of this fee is non-refundable. For refund, written notice of cancellation must be received before June 10)

\$50.00

Second Installment of the Program Fee must be paid by March 1 **OR** within one week following notification of a) acceptance, **OR** b) the financial aid award, *whichever is later*. This installment is non-refundable if the student subsequently cancels except in case of verified medical emergency of the student. Written notice of cancellation must be received before June 10.....

\$300.00

Third Installment of the Program Fee must be paid a) by May 1 **OR** b) within one month following the due date of the Second Installment, *whichever is later* ...

\$300.00

Final Installment of the Program Fee must be received no later than the student's June 21 arrival on campus:

LSM Alumni – Applications postmarked by Feb. 15	\$800.00
All Students – Applications postmarked by April 1	\$840.00
All Students – Applications postmarked by May 1	\$890.00
All Students – Applications postmarked after May 1	\$940.00

Other Fees

Required

Refundable badge and property damage deposit	\$15.00
Group emergency health and accident insurance	\$7.00
Music-Drama-Art Caravan to Minneapolis/St. Paul, Minn	\$25.00

Optional

Enrichment Areas (<i>except jazz band @ \$10.00</i>)	\$25.00
Lessons on second instrument or voice	
8 twenty-five minute lessons	\$120.00
4 twenty-five minute lessons	\$60.00
Airport shuttle (arrival or departure)	\$25.00

If a student qualifies for an early application discount and/or a scholarship or grant-in-aid (other than a transportation grant) from Lutheran Music Program, Inc., the balance owed by the student is the Program Fee less the discount and/or the amount of aid awarded. The balance may be paid by any combination of student and sponsor funds.

Overpayment of the Program Fee will be applied to other fees. Any remaining overpayment of **non-donated** funds will be refunded after the close of camp.

Make checks payable in U.S. funds to “Lutheran Music Program.” It is the responsibility of the student's parent/guardian to ensure that all fees are fully paid (from family or outside resources) by the time of registration or, if that is not possible, to arrange for and submit to LMP a deferred payment contract signed by them by the time the student arrives at camp. No deductions or refunds are made for late arrival, early departure, or in case of disciplinary separation of the student from the program.

Student Application - LSM'92

11

(Please print or type)

Application deadline: June 1, 1992

1. Full name _____ Phone (____) _____
(first) (middle initial) (last)

2. Address _____ Date of birth _____

City _____ State _____ ZIP _____ Sex _____ Age _____

3. High School class _____ Other _____ Circle Yrs. attended LSM: _____ Other _____
 March 1992: (circle) Fr. So. Jr. Sr. (specify) _____ '88 '89 '90 '91 (specify) _____

4. Name of school _____ Phone (____) _____

Address _____
(Street) (City) (State) (ZIP)

5. Congregation _____ Denomination _____ Synod/Church Body _____

Address _____
(Street) (City) (State) (ZIP)

Father, Stepfather or Male Guardian

Mother, Stepmother or Female Guardian

6. _____
Name

_____ Name

7. _____
Home address

_____ Home address

8. _____
Occupation/Title

_____ Occupation/Title

9. _____
Name of firm

_____ Name of firm

10. (____) _____
Work phone

(____) _____
Work phone

MUSIC STUDENT (Read p.5 "Studying & Performing," then give information on each numbered line below, check boxes, fill in blanks):

11. First instrument or voice classification _____ Years studied _____

12. Second instrument or voice classification _____ Years studied _____

13. (for lessons at extra cost for ensemble membership)

14. Send me information and entry form for Concerto Performance Auditions. Application due June 1.

15. I am not applying for financial assistance from LMP.

16. I am applying for financial assistance from LMP. (My application for financial aid is enclosed. LMP Incentive Grants are only awarded to those eligible for financial assistance.)

17. I am applying as an Intern (LSM alumni only - min. college fresh. yr. completed)

If accepted as a student, I agree to abide by Lutheran Music Program, Inc., regulations and to cooperate with camp authorities in furthering the ideals of the Program. I agree not to possess or use alcoholic beverages, tobacco, or unauthorized drugs while a student in the Program. I agree to remain a student for the entire session unless prevented by reasons beyond my control. I understand that no deductions or refunds of the Program Fee and other fees will be made for late arrival, early departure, or expulsion for disciplinary reasons. I agree to fulfill my obligation for full payment of my account. I give my approval to record and broadcast performances in which I participate and which have been deemed appropriate by the Executive Director.

and _____

(signature of parent or guardian required)

(signature of applicant required)

Reminder - No application will be considered unless the following are included:

All Students-

Audition tape(s)

\$50 First Installment

New Students must also send-

Personal Recommendation

Musical Recommendation

Lutheran Music Program, Inc., does not discriminate on the basis of race, color, or national or ethnic origin in regard to admission of students or faculty, instruction, activities, or financial assistance.

This program made possible in part by support of AAL.



Aid Association for Lutherans

Amherst, Wisconsin 54405-0001

Lutheran Summer Music Is Affordable!

For those who need financial assistance to attend camp, several types of aid are available:

- ◆ Incentive Grants of up to \$200 from Lutheran Music Program
- ◆ Local Matching Grants of up to \$600 from student-secured sponsors
- ◆ Other LMP scholarships and grants -for students demonstrating financial need -for students needed to fill camp ensemble and program quotas
- ◆ Transportation Grants for students with high travel costs

For details, see
"Financial Aid
Guidelines"
available on
request.

**Plan to Attend:
"Sounds of Summer"
Festival
July 14-19
St. Olaf College Campus
Northfield, Minn.**



Lutheran Music Program, Inc.
2225 Washington Street
Lincoln, NE 68502