

LUTHERAN

1

a

SUMMER

6

place to

MUSIC

6

GROW

4

St. Olaf College Campus
Northfield, Minnesota

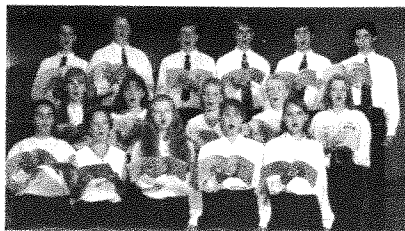
June 19 to July 17




THE NATIONAL LUTHERAN MUSIC CAMP


An affordable, comprehensive camp for talented high school students


LUTHERAN SUMMER MUSIC





Great A Place to Grow

 **Grow as part of a major ensemble.**
...play or sing great music in Symphony Orchestra, Concert Choir, Concert Band led by distinguished directors

 **Grow through small ensemble experience.**
...develop independence and teamwork together with good friends in string quartets and other small instrumental and vocal ensembles

 **Grow as an individual musician.**
...study with master teachers who really care about helping you

 **Grow in musical understanding.**
...enjoy the challenge of new literature, new ensembles; learn new skills and ideas

 **Grow in appreciation of worship.**
...experience musical excellence in a lively worship tradition



*Enjoy a month of musical and personal growth
in a caring, Christian environment!*





Dear Student,

Lutheran Summer Music is a place for teenagers who really love music—a place to grow in many ways, but especially in music.

Everything at the camp is designed for your growth: you will discover friends from across America who share your love of music...you will experience life on a college campus...you can raise your musical skills to a whole new level...you can achieve independence by setting and reaching goals...you can enjoy making daily progress over an entire month...you will find worship at camp to be surprisingly meaningful.

This brochure tells you much about Lutheran Summer Music. Our 10-minute video tells even more.

I encourage you to picture yourself at LSM and apply for admission to an unforgettable summer experience at "A Place to Grow."



*Carlos R. Messerli
Executive Director
Lutheran Music Program, Inc.*

Carlos R. Messerli

Dear Musician,

If LSM sounds like an exciting opportunity for you, please get in touch with me and our staff. I will be happy to answer your specific questions about such things as:

- faculty*
- special camp features*
- how to apply*
- affordability and financial aid*
- travel arrangements*
- your special concerns*

Please write or call (collect) at any time, including evenings and weekends, at (402) 474-7177. We will do everything we can to help you solve problems so that you might enjoy the wonderful growth opportunities at Lutheran Summer Music.



*John Lunde
Director of Admissions
and Financial Aid*

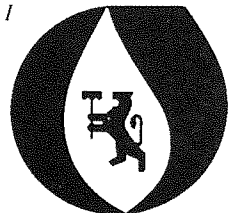
John Lunde

A Message from St. Olaf College

This summer St. Olaf College will once again welcome to its campus Lutheran Summer Music. I am pleased to note that this outstanding summer program for the education of young musicians held its first month-long camp twelve years ago at St. Olaf in 1982. Since then it has appeared on six other Lutheran college campuses and again at St. Olaf in 1992. I encourage all who love our Lutheran heritage of music to support the music camp, and I certainly recommend that musically talented young men and women of high school age apply to attend Lutheran Summer Music – 1994. They could thereby take advantage of the wonderful opportunity to further their musical education and participants will thereby become acquainted with the St. Olaf campus.

Melvin D. George

*Melvin D. George
Director*



4 STUDYING AND PERFORMING



Lutheran Summer Music offers a rewarding immersion in required and optional musical activities. All who complete the camp receive a Certificate of Participation.

Concerts and Recitals—Participation in or attendance at all musical performances at camp is required as fundamental to the study and enjoyment of music of all periods and styles.

Lessons—Individual instruction is offered on all orchestral and band instruments, voice, piano, and organ. All students take two 25-minute lessons each week in their first instrument or in voice. In addition, many students choose to take 1 or 2 optional lessons per week in a second instrument or in voice.

Small Ensembles—Small musical ensembles are a hallmark of the music camp. All students belong to chamber ensembles (string quartets, brass and woodwind quintets, keyboard and vocal ensembles, etc.) at appropriate levels of advancement as determined by auditions and subsequent progress. Ensembles normally rehearse four days each week. *Jazz ensemble* and *Collegium musicum* (historic instruments) are available to students having special interest and aptitude.

Large Ensembles—All students (including pianists and organists) are assigned to concert choir, symphony orchestra, concert band, string ensemble, wind ensemble or flute choir as determined by auditions. While every effort will be made to honor student preferences for ensembles, placement is determined by

auditions, schedules, and ensemble requirements. Large groups meet five days each week.

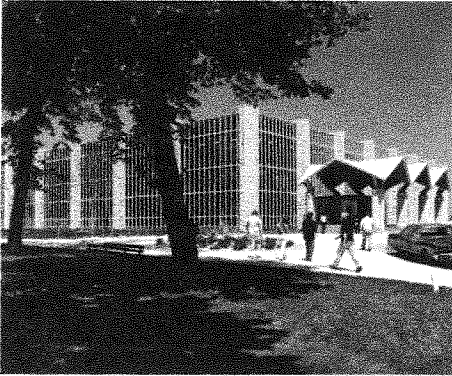
Music Listening and Theory—To develop musicianship and musical perspective, all students study works of great composers and principles of theory. Placement tests will determine listening and theory section assignments. Advanced students may elect composition class. Music listening meets twice and theory and composition classes meet three times each week.

Enrichment Areas—Enrichment Areas provide a broadened artistic experience in a workshop setting. Students may select an area based on their interest and previous experience from among the following: musical theatre, drama, dance, and art. Specific offerings depend on registration. Classes meet three days each week.

Church Music—Worship provides a natural outlet for the performance of music by Christians. Campers learn much about church music just by participating in daily worship and, for some, by singing in the Chapel Choir. Classes in church music are offered twice weekly for those who want to learn more about music leadership in church. Certificates of Participation are awarded to those completing designated requirements.

Conducting—Instruction in conducting instrumental and vocal ensembles is offered optionally in two classes each week.

Concerto Performance Auditions—All wind, string, and keyboard instrumentalists accepted as students in the camp are eligible to audition without extra charge for a performance with the Festival Orchestra during the concluding Festival of the camp. To enter, students must submit a separate audition tape (received by LMP by June 1), which is to be a movement of a concerto chosen from the standard repertoire. Finalists for the live audition at camp will be selected from the tape auditions. Write for more information and an entry form or check item No. 14 on page 11.



Campus – St. Olaf College is located 40 miles south of the Twin Cities in Northfield, Minn., on a wooded hill known as Manitou Heights. The pleasant 350-acre campus features 29 major buildings, including splendid music, worship, recreation and food service facilities. St. Olaf is located just six miles off Interstate 35 and can be easily reached by air, bus, and rail lines to the Twin Cities.

Housing and Meals – Students, counselors, faculty, and staff live as a community on campus. Students are housed in double rooms in modern dormitories with linen and towel service and laundry facilities. Attractive, nutritionally balanced meals are served cafeteria style. Some medically approved diets may be available under special circumstances. Food preparation is not allowed in the living quarters.

Counseling – The Chaplain, the Dean of Students, and adult Christian dormitory counselors are available to assist students to make the most of the many opportunities for personal and musical growth and for individual counseling when needed. All teachers stand ready to assist students in matters relating to their musical progress.

Worship – Christian worship is at the heart of camp life. All campers are expected to participate in daily opportunities to grow spiritually through worship. They will enjoy faculty and student musical participation at

Evening Prayer and Sunday services, as well as brief *Abendmusik* performances that precede worship. Other worship experiences are also available in Northfield.

Social Life and Recreation – The camp offers daily opportunities to enjoy healthful recreation and an active social life. Programs, parties, and dances are scheduled each week. Both supervised and free recreation are offered. Available activities include swimming, basketball, running, volleyball, softball, tennis, aerobics, and weights.

Health Service – Professional health service is available on a daily basis. Nearby hospitals provide emergency service.

Camp Regulations – Christian behavior is expected of all students admitted into the program. They are to abide by the code of appropriate conduct and dress that has been adopted for the welfare and benefit of all campers. Admitted students will be sent the LSM Handbook outlining camp expectations and regulations. In brief: 1. Students may not possess or use alcoholic beverages, tobacco, or unauthorized drugs; sexual activity is not acceptable; 2. Modest and neat summer sports clothes are considered appropriate; 3. Students may not leave the camp without permission; 4. Automobiles and motorcycles are not to be operated by students during the camp; bicycles are not needed; 5. Visitors are always welcome at LSM but they must register at the camp office upon arrival. Student schedules must not be interrupted.



6 FACULTY LEADERSHIP—1993



Artist teachers and directors provide strong nurturing leadership at Lutheran Summer Music. The 1993 faculty included:

Bruce Ammann, Augustana Coll., Sioux Falls SD, *band*

Robin Armstrong, Vermillion, SD, *flute*

Brian Barclay, Brooklyn, NY, *piano*

Monty Barnard, Augustana, Sioux Falls, SD, *voice*

Robert Bill, South Dakota Sym., *string bass*

James Boitos, IL St. U, Normal, *saxophone, jazz ensemble*

Paul Bouman, Oak Park, IL, *Chapel choir, voice*

John Cheek, Concordia Coll., Bronxville, NY, *piano*

Catherine Consiglio, Wichita St. Univ., KS, *viola*

Sandy Consiglio, Wichita, KS, *oboe*

Douglas Diamond, Luther Coll., Decorah, IA, *orchestra*

David Eaton, Iowa City, IA, *music literature, organ*

James Erickson, Glenview, IL, *low brass*

Carole Tafoya Evans, Ft. Wayne Phil., IN, *violin*

Mark Evans, Wichita St. Univ., KS, *cello*

Lori Everson, Philadelphia, PA, *violin*

Terry Everson, Philadelphia, PA, *trumpet*

Geoff Gunderson, Sioux Falls, SD, *guitar*

Gregory Helseth, Omaha Sym., NE, *Fr. horn*

Jana Holzmeier, Augustana Coll., Rock Island, IL, *voice*

Martin Jean, Valparaiso Univ., IN, *organ*

James Johnson, Augustana, Sioux Falls, SD, *choir*

Margaret Kennedy, Univ. of Nebr.-Lincoln, *voice*

Sharon Kleinhuizen Jensen, Augustana, Rk Is., IL, *piano*

Jerry Kramer, Sioux Falls, SD, *percussion*

Diane McCloskey, Kent State Univ., OH, *flute*

Victor H. Mattfeld, CUNY, *Collegium musicum*

David Neely, Univ. of Nebr.-Lincoln, *violin*

Ann Pesavento, Gustavus Adolphus, St. Peter, MN, *bassoon*

Lori Ronning, St. Olaf College, Northfield, MN, *piano*

Robert Satterlee, Augustana Coll., Rock Island, IL, *piano*

Oliver Worthington, Austin, TX, *voice*

Sarah Young, Milwaukee, WI, *clarinet*

LSM Resident Ensembles

Omega String Quartet,

Movère Woodwind Quintet

Camp Administration

Carlos R. Messerli, Lincoln, NE, *Executive Director*

Scott C. Weidler, Lancaster, PA, *Summer Program Director*

The Rev. Martin Seltz, Livonia, MI, *Chaplain*

Michael Krueger, Champaign, IL, *Dean of Students*

Special Events

Lutheran College Fair – An opportunity for students to get acquainted with the musical and other educational offerings of a score of Lutheran colleges. It features opportunity for personal interaction with college admissions counselors or musicians.

Music-Drama-Art Caravan – An excursion is planned to sample the rich cultural life of Minnesota's Twin Cities and to perform in area churches. Admission to museums, concerts and/or plays will be arranged as available.

“Sounds of Summer” Festival

The ideal time for guests to visit the camp is during the “Sounds of Summer” Festival (July 11-17) with its many concerts, recitals, displays, and worship services, most of which are scheduled at St. Olaf College. A special concert by the Festival Symphony Orchestra and Festival Choir is scheduled at the new Ted Mann Hall at the Univ. of Minn., Minneapolis, on Friday, July 15. Information about all tickets, schedules, housing, and meals is available from the Lutheran Music Program office.



Terry
Everson



Lori
Everson

Faculty – Distinguished faculty members have set high standards for quality of instruction and personal concern for students. The LSM faculty of past years has included:

Steven Amundson, St. Olaf Coll., Northfield MN, *orchestra*; **Eldon Balko**, Valparaiso U., IN, *voice*; **Robert Bergt**, Musachino Academy, Japan, *orch.*, *violin*; **Gary Bordner**, St. Paul Chamber Orch., MN, *trumpet*; **Donald Busarow**, Wittenberg, OH, *organ, comp.*; **Bonnie Buss**, Augustana, IL, *voice*; **René Clausen**, Concordia, Moorhead, *choir*; **Douglas Diamond**, Luther Coll., IA, *orch.*; **Karle Erickson**, Gustavus Adolphus, MN, *choir*; **Steve Erickson**, Omaha Symp., NE, *trumpet*; **Frederick Fennell**, Miami, FL, *band*; **Kirkland Ferris**, Minn. Orch., Mpls., *bassoon*; **Betty Gehring**, Valparaiso U., IN, *viola*; **Philip Gehring**, Valparaiso U., IN, *organ, comp.*; **Charles Gray**, St. Olaf, *violin, viola*; **Gregory Helseth**, Omaha Sym., NE, *Fr. horn*; **Anthony Holt**, St. Olaf, *voice*; **Craig Johnson**, U of TX, Austin, *choir, voice*; **Sigrid Johnson**, St. Olaf, *choir, voice*; **Ann Jones**, Robert Shaw Chorale, Atlanta, GA, *choir, voice*; **Katherine Borst Jones**, Ohio St U, *flute*; **Merilee Klemp**, Augsburg Coll., Mpls., MN, *oboe*; **Alice Larsen**, Northfield, MN, *choir*; **Lucinda Marvin**, Mpls., MN, *violin*; **Christelle Menth**, Concordia, NE, *piano*; **Daniel Moe**, Oberlin Consv., OH, *choir*; **Donald Morrison**, Augustana, IL, *choir*; **Weston Noble**, Luther Coll., IA, *band, choir*; **Fred Nylind**, Luther Coll., *band*; **Walter Pelz**, Bethany, Lindsborg, KS, *organ, comp.*; **Russell Pesola**, Concordia, MN, *band*; **John Pfautz**, Augustana, IL, *voice*; **Frederick Telschow**, Valparaiso U., IN, *choir*; **Dale Warland**, Dale Warland Singers, MN, *choir*; **A. DeWayne Wee**, St. Olaf, *piano*; **Theo Wee**, St. Olaf, *piano.*; **George Work**, Iowa St. U, *cello*.

Guest Artists – Many guest artists have illuminated the stage of Lutheran Summer Music, both in concerts and in master classes with students:

Arden Trio, 1983 N.Y.C. Concert Artist Competition Winners; **Dallas Brass**, Dallas, TX; **Robert Schumann Chamber Orchestra**, Dusseldorf, Germany; **John Brandstetter**, *baritone*, internationally active opera soloist; **Ruebén González**, *violin*, Associate Concertmaster, Chicago Symphony Orchestra; **Valery Grokhovsky**, *piano*, award-winner, International Bousoini contest in Boltzano, Italy; **Irene Gubrud**, *soprano*, 1980 Naumberg International Voice Competition Winner; **Elizabeth Holleque**, *soprano*, 1984 National Metropolitan Opera Winner; **Leopold LaFosse**, *violin*, and **Kenneth Amada**, *piano*, Univ. of Iowa; **Theodore Lettvin**, *piano* Univ. of Michigan; **Daniel McKelway**, *clarinet*, 1984 Young Concert Artists International Auditions Winner; **Paul Manz**, *organ*, Chicago; **André-Michel Schub**, *piano*, winner, 1974 Naumberg International, 1977 Avery Fisher, and 1981 Van Cliburn piano competitions; **Jonathan Shames**, *piano*, winner, 1982 Silver Medal, Moscow Tchaikovsky Competition; **Ruth Slenczynska**, *piano*, Southern Illinois University; **Philip Smith**, *Co-prin. trumpet*, N.Y. Philharmonic; **William Scarlett**, *Ass't Prin. trumpet*, Chicago Symphony Orch.



André-Michel
Schub



Elizabeth
Holleque

Music Teachers, Directors, Youth Leaders, and Students: An inspiring 10-minute VHS videotape describing Lutheran Summer Music and its impact on students is available on free loan. Other LSM audio and video tapes are also available for purchase or loan. Please write or call LMP (collect) to order.

8 THE STORY OF LUTHERAN MUSIC PROGRAM

Thirteen years ago a group of visionary Lutheran educators and musicians conceived a program of high quality in music that would encourage youth of high school age to develop their God-given talent and to strengthen and extend the Christian tradition of fine musical performance in worship.

Aid Association for Lutherans supported a 1981 feasibility study that confirmed the strength of the concept. With seed money from AAL, an independent policy-making board of directors was formed and an executive director engaged.

Month-long Lutheran Summer Music camps have been held annually since 1982 on various college campuses, such as St. Olaf (Minn.), Valparaiso (Ind.), Luther (Iowa), Wittenberg (Ohio), Augustana (Ill.), Concordia (Minn.), and Augustana (S. Dak.). LSM now annually attracts well over 200 students from about 35 states.

The program is supported by fees from participants, grants from organizations and donations from many congregations and individual LMP PARTNERS, who especially recognize the need for funds for scholarships and financial aid for worthy students.

LMP Board of Directors

Mr. Raymond G. Avischious, *President*
Rolling Meadows, Illinois

The Rev. Dr. August Bernthal,
Vice President, Winter Haven, Florida

Mrs. Darlene Swanson, *Secretary*
Omaha, Nebraska

Mr. Dieter Nickel, *Treasurer*
Merrill, Wisconsin

Mr. Gary Aamodt
Minneapolis, MN

Mrs. Phyllis Duesenberg
St. Louis, Missouri

Mrs. Betty Franke, Addison, Illinois
Dr. Arvin Hahn, Zionsville, Indiana

The Rev. Victor O. Mennicke
Sarasota, Florida

Mrs. Ewald H. Mueller
Webster Groves, Missouri

Dr. Carl F. Schalk
River Forest, Illinois

Mr. William Seeber
Valparaiso, Indiana

Dr. Frederick H. Telschow
Valparaiso, Indiana

“What others have said...”



“A marvelous camp...an ideal emphasis on chamber music...wonderfully gifted and cooperative young people.”

—*André Michel Schub, pianist,
LSM guest artist*

“The people are extraordinary; the music is unbelievable—an experience of complete growth—musical, spiritual, emotional, and social.”

—*LSM camper*

“Lutheran Music Program helps to foster in young people an understanding of classical music and historic worship forms and how the two can commingle.”

—*Dr. Martin Jean, 1992 winner
Am. Guild of Organists Competition,
LSM faculty*

“It almost seems as if the greatest years of historic Lutheran music are being re-enacted in Lutheran Summer Music.”

—*Dr. Eugene Helm, musicologist,
University of Maryland*



Preference in admission is given to those students of high musical ability who have demonstrated a lively interest in the affairs of their church and school and who have the capacity to work well with other students and adults. Total enrollment will be limited and quotas of admission have also been set for each vocal and instrumental area to achieve the best program for all who are admitted and to maintain a balance of ensemble membership. Some quotas are filled early. To receive full consideration for both acceptance and financial assistance, applications must be mailed to Lutheran Music Program by **June 1. Preference will be given to the earliest and most qualified applicants.** (Note: To facilitate early registration, Program Fee discounts are available for applications postmarked by March 15 (save \$100) and May 1 (save \$50).)

As soon as an application has been evaluated, a letter of acceptance or non-acceptance will be sent. If a student is not accepted, an **alternate status** may be assigned pending subsequent openings. A student may be admitted conditionally when the quota for the student's "first" instrument (or voice) has been filled or when audition tape performance suggests difficulty in meeting camp goals.

All fees deposited will be returned to alternates if they have not been accepted as students. An applicant accepted conditionally who does not wish to attend camp under the conditions offered by the Program may obtain a full refund by submitting a letter of withdrawal.

Application Procedure

To be considered for admission, an applicant must mail all of the following items by June 1: **Note:** Applicants should send in items 1 & 2 if items 3, 4, and 5 will be delayed.

1. Complete **application form** signed by **both** student and parent or guardian (All students)
2. Payment of **\$50 First Installment**; see p. 10 (All students)
3. **Cassette tape recording(s)**; see following information (All students)
4. **Musical recommendation** from a music teacher or director regarding the student's ability to profit from intensive individual music study and group performance (New students only)
5. **Personal recommendation** from a pastor, adult leader or teacher, in a non-music area evaluating the student's maturity and ability to adjust to the requirements of living in a month-long summer camp environment (New students only)

Note: personal musical auditions will also be given each student upon arrival at camp.

*Less experienced singers, auditioning for ensemble only, may submit a simplified voice tape which includes: a. One-octave scales (one high, one low) sung on "lah," b. a hymn melody (with accompaniment), c. a hymn voice-part that is not the melody (with accompaniment.)

Tape Audition Information

1. All students must submit with their applications a **separate** cassette tape of performance on **each** instrument (or voice) offered for either lessons or for ensemble membership. **Note:** Keyboard students are expected to participate in a large ensemble; therefore (for placement purposes only) they must submit a second tape in voice or in another instrument.*
2. Each recording should not exceed 15 minutes.
3. Music to be performed is the choice of the student, but the following should be included to the extent possible:
 - a. Scales, exercises, or vocalizes
 - b. One or two (accompanied if possible) solo compositions (or hymn melodies) **and/or**
 - c. unaccompanied excerpts of orchestra, band, or chorus parts, or hymn voice-parts (except piano, organ, or guitar)
4. When recording, the student should clearly announce: a) his or her name, b) name of exercise or composition, c) name of composer
5. Each cassette and cassette container must be labeled with student's name and address, name of instrument or voice, and list of pieces performed.

Mailing Address

Before June 10
Lutheran Music Program, Inc.
2225 Washington Street
Lincoln, NE 68502
Phone: (402) 474-7177

From June 11 through July 20
Lutheran Music Program, Inc.
St. Olaf College
Northfield, MN 55057
Phone: (507) 646-6262

10 FEES



The actual cost of offering Lutheran Summer Music-1994 will be nearly \$2,700 per student. Automatic scholarships of \$1,010 from the generous donors participating in the LMP PARTNERS program reduce this amount to the **Program Fee of \$1,690.**

The **Program Fee includes tuition** for most classes, **lessons** in one instrument or voice, rehearsals, admission to performances, **meals**, a shared dormitory **room**, and use of campus recreational facilities. It does not include personal spending money, fee for optional enrichment area or additional lessons, transportation to or from campus, off-campus excursion costs, or required group emergency health and accident insurance.

Program Fee – \$1,690.00

LSM Alumni – Application postmarked <i>by</i> February 1	\$1,570.00
All Students – Application postmarked <i>by</i> March 15	\$1,590.00
All Students – Application postmarked <i>by</i> May 1	\$1,640.00
All Students – Application postmarked <i>after</i> May 1	\$1,690.00

Program Fee – Schedule of Payments:

First Installment of the Program Fee must accompany all applications. (In case of cancellation by the student, \$25 of this fee is non-refundable. For refund, written notice of cancellation must be received before June 15)

\$50.00

Second Installment of the Program Fee must be paid by March 1 **OR** within one week following notification of a) acceptance, **OR** b) the financial aid award, **whichever is later.** This installment is non-refundable if the student subsequently cancels except in case of verified medical emergency of the student. Written notice on cancellation must be received before June 10

\$300.00

Third Installment of the Program Fee must be paid a) by May 1 **OR** b) within one month following the due date of the Second Installment, **whichever is later.**

\$300.00

Final Installment of the Program Fee must be received no later than the student's June 19 arrival on campus:

LSM Alumni – Applications postmarked by Feb. 1	\$920.00
All Students – Applications postmarked by March 15	\$940.00
All Students – Applications postmarked by May 1	\$990.00
All Students – Applications postmarked after May 1	\$1,040.00

Other Fees:

Required

Refundable badge and property damage deposit	\$20.00
Group emergency health and accident insurance	\$8.00
Music-Drama-Art Caravan to Minneapolis/St. Paul, Minn	\$30.00

Optional

Enrichment Areas (<i>except jazz band @ \$10.00</i>)	\$30.00
Lessons on second instrument or voice	
8 twenty-five minute lessons	\$120.00
4 twenty-five minute lessons	\$60.00
Airport shuttle (arrival or departure)	\$17.00

If a student qualifies for an early application discount and/or a scholarship or grant-in-aid (other than a transportation grant) from Lutheran Music Program, Inc., the balance owed by the student is the Program Fee less the discount and/or the amount of aid awarded. The balance may be paid by any combination of student and sponsor funds.

Overpayment of the Program Fee will be applied to other fees. Any remaining overpayment of **non-donated** funds will be refunded after the close of camp.

Make checks payable in U.S. funds to "Lutheran Music Program." Please do not send cash. It is the responsibility of the student's parent/guardian to ensure that all fees are fully paid (from family or outside resources) by the time of registration or, if that is not possible, to arrange for and submit to LMP a deferred payment contract signed by them by the time the student arrives at camp. No deductions or refunds are made for late arrival, early departure, or in case of



STUDENT APPLICATION-LSM '94 11

(Please print or type)

Application deadline: June 1, 1994

1. Full name _____ Phone(____) _____
(first) (middle initial) (last)

2. Address _____ Date of birth _____

City _____ State _____ ZIP _____ Sex _____ Age _____

3. High School class _____ Other _____ Circle Yrs. attended LSM: Other _____
March 1994: (circle) Fr. So. Jr. Sr. (specify) _____ '90 '91 '92 '93 (specify) _____

4. Name of school _____ Phone (____) _____

Address _____
(Street) (City) (State) (ZIP)

5. Congregation _____ Denomination _____ Synod/Church Body _____

Address _____
(Street) (City) (State) (ZIP)

Father, Stepfather or Male Guardian

Mother, Stepmother or Female Guardian

6. _____ Name _____

7. _____ Home address _____

8. _____ Occupation/Title _____

9. _____ Name of firm _____

10. (____) _____ Work phone (____) _____
Work phone Work phone

MUSIC STUDENT (Read p.4 "Studying & Performing," then give information on each numbered line below, check boxes, fill in blanks):

11. First instrument or voice classification _____ Years studied _____

12. Second instrument or voice classification _____ Years studied _____

13. for lessons at extra cost for ensemble membership

14. Send me information and entry form for Concerto Performance Auditions.
Entry form and separate Concerto Audition tape due June 1.

15. I am not applying for financial assistance from LMP.

16. I am applying for financial assistance from LMP. (My application for financial aid is enclosed.
LMP Incentive Grants are only awarded to those eligible for financial assistance.)

17. I hereby apply for AAL Member Scholarship. Applicant's Certificate # _____

18. I am applying as an Intern (LSM alumni only - min. college fresh. yr. completed)

If accepted as a student, I agree to abide by Lutheran Music Program, Inc., regulations and to cooperate with camp authorities in furthering the ideals of the Program. I agree not to possess or use alcoholic beverages, tobacco, or unauthorized drugs while a student in the Program. I agree to remain a student for the entire session unless prevented by reasons beyond my control. I understand that no deductions or refunds of the Program Fee and other fees will be made for late arrival, early departure, or expulsion for disciplinary reasons. I agree to fulfill my obligation for full payment of my account. I give my approval to record and broadcast performances in which I participate and which have been deemed appropriate by the Executive Director.

(signature of parent or guardian required)

and

(signature of applicant required)

Reminder - No application will be considered until the following are received:

All Students-

- Audition tape(s)
- \$50 First Installment

New Students must also send-

- Personal Recommendation
- Musical Recommendation

Lutheran Summer Music Is Affordable!

For those who need financial assistance to attend camp, several types of aid are available.

- Incentive Grants of up to \$200 from Lutheran Music Program
- Local Matching Grants of up to \$600 from student-secured sponsors
- AAL Member Scholarships of \$200 to \$600
- Other LMP scholarships and grants
 - for students demonstrating financial need
 - for students needed to fill camp ensemble and program quotas
- Transportation Grants for students with high travel costs

For details see “Financial Aid Guidelines” available on request.

**Plan to Attend:
“Sounds of Summer”
Festival
July 11-17
St. Olaf College
Northfield, MN**



**Lutheran Music Program, Inc.
2225 Washington Street
Lincoln, NE 68502**