

Take your
summer **up**
an octave at **LSM!**



June 24–July 22, 2007



on the campus of
Gustavus Adolphus College
St. Peter, Minnesota

Grades 8–12

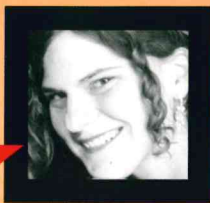
Lutheran
Summer
Music
Academy
& Festival



www.lutheransummermusic.org

"The sense of community that is built at LSM is unparalleled. LSM instills a sense of professionalism and humanity but above all a sense of collegiality that you don't find anywhere else."

Dr. Andrea Banke
*Assistant Professor of Music
Wichita State University
Principal Oboe
Wichita Symphony Orchestra
1990, 1991 Alumna*



"The motivating influence of peers with a similar passion for music was immeasurable [And] summers there greatly heightened my appreciation for the vital role that music plays in worship. What a priceless gift!"

Dr. Matthew Bernthal
*Associate Professor of Sport and
Entertainment Management
University of South Carolina
1983 Alumnus*



"LSM gave me a sense of what it would be like to study all aspects of music in a conservatory environment, and a renewed sense of purpose and potential, and I changed course to study music full-time."

Lawrence Loh
*Associate Conductor
Pittsburgh Symphony Orchestra
1988, 1989 Alumnus*



Our alumni say it best!



"LSM completely prepared me for my college experience. It helped me understand the audition process, prepare for classes, and network with students and professors from around the country."

Dr. Sangeetha Rayapati
*Assistant Professor of Music
Augustana College in Rock Island, IL
1990, 1991 Alumna*



"The faculty and staff of LSM are unstinting and generous with their time and commitment to their students' growth."

Michael Kleinschmidt
*Director of Music and Organist
Trinity Church in the City of Boston
1982 alumnus*



**LSM is an experience
of a lifetime!!**

**Lutheran Summer Music
engages talented high
school music students
from around the United**

**States and the world in four weeks
of intense learning and music-making.**

**LSM students receive
instruction from nationally
and internationally
known faculty.**



**Students are
also nurtured and mentored by an
extensive counseling and spiritual-life
staff committed to a student's holistic growth.**

**LSM above all is a community, a community
that is built on musical growth and spiritual
grounding. You'll meet friends for life, grow
individually and spiritually, and have one of
the most fulfilling experiences of your life!**

Curriculum

Primary Lessons—Individual instruction is offered on all woodwinds, brass, strings, voice, guitar, harp, piano, and organ. All students take two 25-minute lessons each week on their primary instrument or voice.

Large Ensemble—All students take part in either the symphony orchestra, concert band, or chorus.

Small Ensemble—Chamber Music is a critical component of the Academy curriculum. All LSM students belong to a chamber ensemble (string quartet, brass or woodwind quintet, keyboard or vocal ensemble, etc.)

Musicianship—To develop musicianship and musical perspective, all students study works of great composers and principles of musicianship and music theory.

Concerts, Recitals, and Worship—

Performance is an integral part of LSM. Students learn performance practice from the faculty, are introduced to different types of music, and gain confidence from performing in front of their peers.



NOT ENOUGH FOR YOU?

LSM Electives:

- Second Instrument/Voice Lessons
- Second Large Ensemble (Orchestra, Band, Choir)
- Chapel Choir (no audition)
- Collegium Musicum (historical instruments)
- Handbell Choir
- Conducting
- Jazz Ensemble (by audition only)
- Jazz Improvisation
- Class Piano
- Class Voice

LSM 2007

LSM is thrilled to return to the campus of Gustavus Adolphus College in St. Peter, Minnesota, for its 2007 season. We are pleased to announce the following conductors for LSM 2007:



Dr. Jeffery Meyer

O R C H E S T R A

Dr. Jeffery Meyer, Orchestra Conductor

Jeffery Meyer returns to LSM for his fifth summer in 2007. Dr. Meyer serves as Director of Orchestras at Ithaca College School of Music, and as the founder and Artistic Director of the St. Petersburg Chamber Philharmonic in St. Petersburg, Russia. A brilliant pianist, in recent concert seasons he has been seen conducting, performing as piano soloist and chamber musician, as well as conducting from the keyboard in the United States, Canada, Russia, and Germany.

C H O R A L

Dr. Allen Hightower, Choir Conductor

The Phyllis and Richard Duesenberg Concert Choir Chair

Allen Hightower is Professor of Music and Director of Choral Studies at Sam Houston State University. He also serves as Music Director of the Houston Masterworks Chorus, the city's largest independent chorus. Dr. Hightower has conducted the Houston Bach Choir and Orchestra and is a frequent guest conductor of student and professional choral ensembles. In April 2007, Dr. Hightower makes his conducting debut at Carnegie Hall. His Sam Houston State University choir has been selected to sing at the 2007 American Choral Directors Association National Conference in Miami.



Dr. Allen Hightower

B A N D

Dr. Bruce Ammann, Band Conductor

Bruce Ammann is in his 18th year as Director of Bands and Professor of Music at Augustana College in Sioux Falls, South Dakota. Prior to coming to Augustana, Dr. Ammann served on the faculties of Arizona State University and the University of Florida. Dr. Ammann has taught all levels of public school instrumental music. He is active as an adjudicator and clinician throughout the country and has presented clinics at several state music educators' conventions as well as at the prestigious Mid-West Band Clinic. Dr. Ammann last conducted at Lutheran Summer Music Academy & Festival in 1995.



Dr. Bruce Ammann

A day in the life of an LSM student

This LSM student is a vocal major with cello as a second instrument. This may look like a busy schedule, but the mentorship students receive and the lasting friendships students build along the way make LSM an unforgettable experience.

- 7:00am — Wake up
- 7:30am — Breakfast
- 8:00am — **Musicianship Class or Small Ensemble Rehearsal**
- 9:00am — **Morning Prayer and Announcements**
- 9:30–11:00am — **Practice Time**
- 11:00am — **Choir Rehearsal**
- 12:30pm — Lunch
- 1:00–2:00pm — **Practice Time** or Recreational Time
- 2:00pm — **Orchestra Sectionals**
- 3:00pm — **Voice Lesson**
- 3:30–5:00pm — Recreational Time
- 5:00pm — Dinner
- 5:40pm — **Orchestra Rehearsal**
- 7:30pm — **Faculty Artist Recital**
- 8:30pm — **Evening Prayer**
- 9:00pm — Recreational Time
- 11:00pm — Lights out



Frequently Asked Questions about LSM

How do I get there?

We are a national program with students coming from all over the country. For students who need to fly to Minnesota, we provide a shuttle from the Minneapolis/Saint Paul airport to the Gustavus Adolphus campus in St. Peter, Minnesota. The LSM Counseling Staff meets the students right at Baggage Claim and chaperones the shuttle.

I'm not Lutheran; do I have to be?

Absolutely not! Sixty percent of our student body is Lutheran. The other forty percent is comprised of students of varying denominations and faiths.

[Lift the next page for more questions and answers >>>](#)

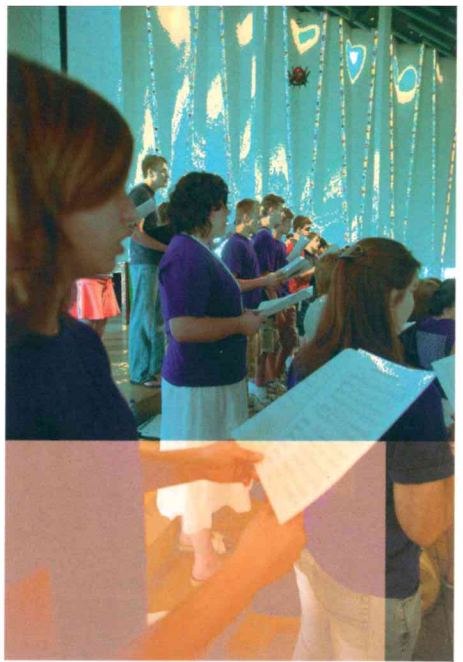
Where do we live? Where do we eat?

LSM students live in the new air-conditioned Southwest Hall on the campus of Gustavus Adolphus College. Students take their meals in the campus cafeteria which offers a wide variety of foods from pasta to salads to burgers and fries. Vegetarian options are available. As part of the students' room and board fee, three meals a day are provided.

Why choose LSM over other summer music programs?

LSM truly is different from any other music program. Here are a few aspects that make it unique.

- **College-preparatory experience**—Students follow an intense musical schedule but have plenty of opportunity for recreational and social activities. Living away from home, in a dorm with a roommate, gives you a glimpse of what college life is really like. Many of our students have made connections at LSM that follow them into their collegiate and professional careers.
- **National program**—LSM is a national rather than a regional program. This means students meet faculty and colleagues from around the country and the world. This diversity adds to the LSM experience in a way that a regional or local program can not.
- **Faith-based experience**—Every morning and evening, the LSM community—student body, faculty, and staff—gathers together for prayer. Evening prayer is preceded by a recital. It becomes part of your spiritual growth, while showing how music can be used in new and different ways in a worship setting.
- **Supportive environment**—Students who attend LSM will find a supportive, nurturing community. They learn to work together as an ensemble without the pressure of competition. The result is a community that rejoices in the success of each individual.



With whom will I study?

LSM faculty members come from colleges, universities, and professional musical ensembles around the country. Faculty enjoy the opportunity to mentor budding musicians during the summer. Check out our website to read about past and current faculty.

Another fabulous resource is the counseling staff. They're college graduates who have excelled in music during their college experience. Counselors live in the dorm and are involved in day-to-day life providing personal and professional models for students.

It's the summer and I want to have fun. Will LSM be any fun?

Definitely! Any past student can vouch for this. Though mornings are devoted to classes, lessons, and rehearsals, afternoons are for fun and relaxation. Whether playing ultimate Frisbee, joining a game of volleyball, swimming, or just sitting in the sun talking to new friends, you'll find this makes LSM unforgettable.



COLLEGE DIVISION

Are you in college but still want to be a part of the LSM community? Apply to become a Program Assistant for the 2007 LSM Academy! Program Assistants participate in large ensembles, small ensembles, and take private lessons and also fulfill leadership roles within the community such as ensemble and office assistants. The program is a great opportunity for musical growth and a great resume builder! For more information, please visit our website at www.lutheransummermusic.org.

Photography: Chip Peterson
Graphic Design: Image Spigot
© 2006–2007 Lutheran Summer Music
and Lutheran Music Program

2007 LSM Tuition

Tuition at LSM is competitive with other similar summer programs, while offering an unparalleled opportunity for preparation for the future. Generous financial aid and scholarships are also available for those who qualify.

2007 Costs:\$2950
(includes room and board plus primary private lessons)

LSM does not discriminate on the basis of race, religion, creed, color, gender, disability, or national or ethnic origin.

Financial Aid and Scholarships

Over 80% of our students receive one or more of the following types of financial aid:

Merit-based Scholarships

Awarded based on a student's musical and technical skill and demonstrated personal character



Need-based Financial Aid

Based on the financial needs of the student's family

Incentive Grants

The academy matches funds raised from local sources on a 3 to 1 ratio

Transportation Grants

Awarded to students who travel a long distance to come to LSM



PLEASE POST

122 W. Franklin Avenue, Suite 230
Minneapolis, MN 55404-2451

612-879-9555 phone
888-635-6583 toll free
612-879-9547 fax

www.LutheranSummerMusic.org
LSM@LutheranSummerMusic.org

Frank Stubbs
Executive Director



Take your
summer up
an octave
at LSM!

June 24-July 22, 2007

Grades 8-12

on the campus of
Gustavus Adolphus College
St. Peter, Minnesota

NON-PROFIT ORG.
US POSTAGE
PAID
MINNEAPOLIS MN
PERMIT NO 27037