



# LUTHERAN SUMMER MUSIC

ACADEMY & FESTIVAL

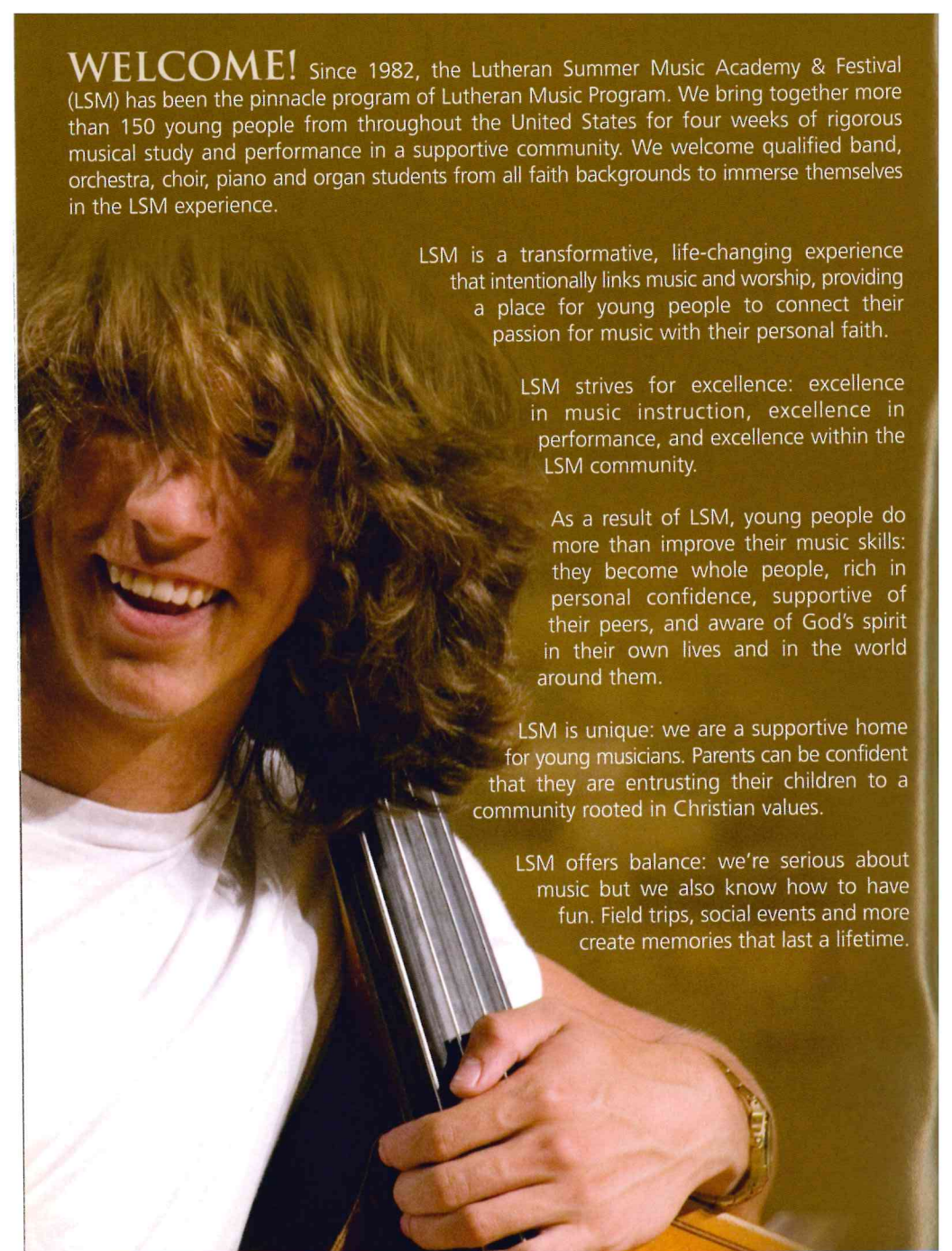
JUNE 22 – JULY 20, 2008

ON THE CAMPUS OF  
GUSTAVUS ADOLPHUS COLLEGE,  
ST. PETER, MINNESOTA



FOR BAND, ORCHESTRA, CHOIR AND KEYBOARD STUDENTS GRADES 8-12

[www.luthersummertime.org](http://www.luthersummertime.org)



**WELCOME!** Since 1982, the Lutheran Summer Music Academy & Festival (LSM) has been the pinnacle program of Lutheran Music Program. We bring together more than 150 young people from throughout the United States for four weeks of rigorous musical study and performance in a supportive community. We welcome qualified band, orchestra, choir, piano and organ students from all faith backgrounds to immerse themselves in the LSM experience.

LSM is a transformative, life-changing experience that intentionally links music and worship, providing a place for young people to connect their passion for music with their personal faith.

LSM strives for excellence: excellence in music instruction, excellence in performance, and excellence within the LSM community.

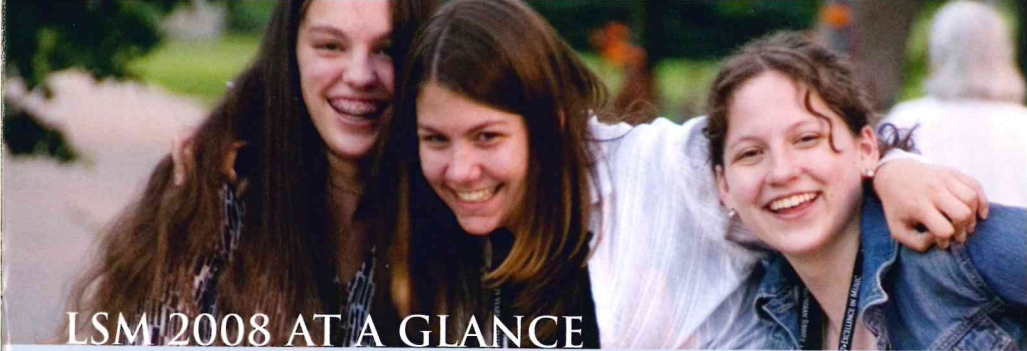
As a result of LSM, young people do more than improve their music skills: they become whole people, rich in personal confidence, supportive of their peers, and aware of God's spirit in their own lives and in the world around them.

LSM is unique: we are a supportive home for young musicians. Parents can be confident that they are entrusting their children to a community rooted in Christian values.

LSM offers balance: we're serious about music but we also know how to have fun. Field trips, social events and more create memories that last a lifetime.

To learn more about LSM and to apply online, visit our website at [www.lutheransummermusic.org](http://www.lutheransummermusic.org). Or, call us at 612-879-9555 (toll-free at 888-635-6583). We can't wait to hear from you!

[www.lutheransummermusic.org](http://www.lutheransummermusic.org)



## LSM 2008 AT A GLANCE

**WHO:** 150+ band, orchestra, choir, piano and organ students from the U.S. and abroad; 35 faculty artists from the best college music departments and professional ensembles; a staff of dedicated counselors, administrators and caring adults

**WHAT:** A four-week residential training and performance program rooted in a supportive, intentional community that is committed to your personal and musical success

**WHERE:** Gustavus Adolphus College, St. Peter, Minnesota

**WHEN:** June 22 to July 20, 2008

**WHY:** "LSM helped me know for sure that music is what I want to do. I improved on my instrument more in four weeks than I did all last year because my teacher was so great."\*

"I like being in a Christian community. You don't feel awkward talking about your faith."\*

"I am way better prepared for college now."\*

"I may not have the same abilities as others, but that is okay – I'll learn different things."\*

"While at LSM, I made some of the best friends I will ever have."\*

"This experience truly is life changing if you grab it by the horns. It is something I'll never regret doing – ever. It offers a unique atmosphere centered solely on music making and everyone is so nice and caring – it's one of the favorite parts of my life so far."\*

**"BEING SURROUNDED BY PEOPLE WHO LOVE YOU, AND UNDERSTAND YOU, IS THE BEST FEELING IN THE WORLD."\***

*\* Unedited outtakes from our 2007 student surveys*



# OUR CURRICULUM

**PRIMARY LESSONS** We offer individual instruction on all woodwinds, brass, strings, voice, piano, organ, guitar, harp and percussion. You'll take two 25-minute lessons each week.

**LARGE ENSEMBLE** You'll be a member of the symphony orchestra, concert band or choir.

**SMALL ENSEMBLE** Chamber music is an important part of LSM. You'll belong to a chamber ensemble (string quartet, brass or woodwind quintet, keyboard, vocal or percussion ensemble) and receive coaching from our faculty.

**MUSICIANSHIP CLASS** You'll build your musical foundation and study the works of great composers, principles of musicianship and music theory.

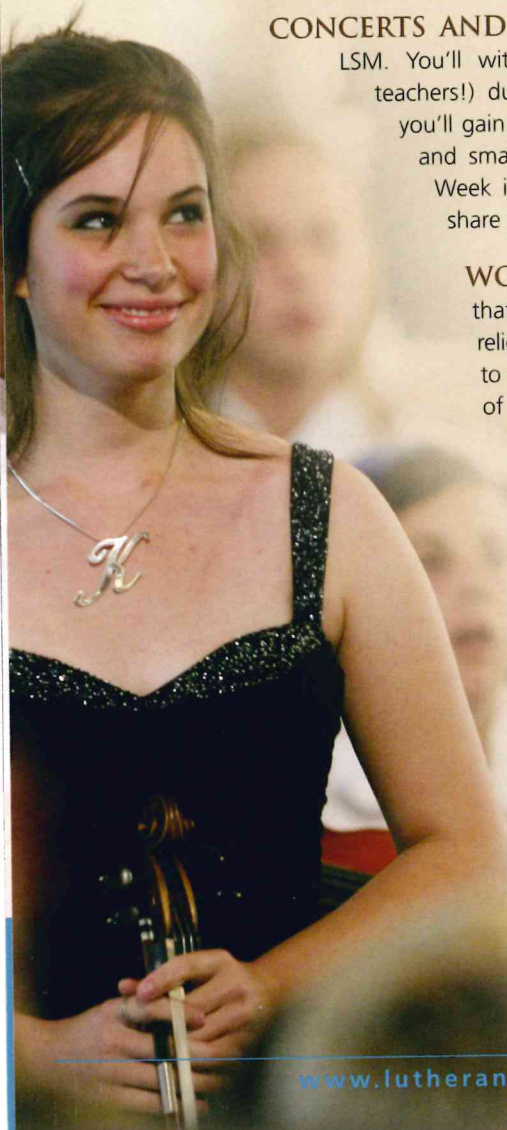
**CONCERTS AND RECITALS** Performance is a highlight of LSM. You'll witness the best professional musicians (your teachers!) during solo and chamber music recitals. Plus, you'll gain confidence in your own abilities through solo and small and large ensemble performances. Festival Week is filled with concerts and recitals so you can share your accomplishments with family and friends.

**WORSHIP** We create an intentional community that links music and worship. Regardless of your religious background, you'll find a supportive home to explore your faith while celebrating the tradition of musical excellence found in the church.

## WANT EVEN MORE?

Electives allow you to further explore your musical passion or try something new:

- Second instrument/voice lessons: \$100
- Second large ensemble (*band, orchestra or choir*)
- Chapel Choir (*no audition necessary*)
- Collegium Musicum (*historical instruments*): \$50
- Handbell Choir
- Conducting: \$50
- Jazz Ensemble (*by audition*): \$50
- Jazz Improv (*no audition necessary*)
- Class Piano: \$50
- Class Voice: \$50
- Church Music



**THE 2008 FACULTY** LSM Faculty Artists come from colleges, universities and professional music ensembles throughout the country. We retain an extraordinarily high number of faculty from year-to-year because they value the opportunity to teach within the LSM community, perform with one another, and work with such an esteemed group of colleagues. Check out complete bios on our website. Your LSM 2008 conductors are:

**ORCHESTRA**

**Dr. Jeffery Meyer** returns to LSM in 2008 for his fifth summer. Dr. Meyer serves as Director of Orchestras at the Ithaca College School of Music and is Founding Artistic Director of the St. Petersburg Chamber Philharmonic in Russia. A brilliant pianist, in recent concert seasons he has conducted, performed as piano soloist and chamber musician, and conducted from the keyboard in the United States, Canada, Russia and Germany.

**CONCERT CHOIR**

**Dr. Chris Aspaas**, The Phyllis and Richard Duesenberg Concert Choir Chair, is Assistant Professor of Choral/Vocal Music at St. Olaf College, and holds degrees from Florida State University, Michigan State University and St. Olaf. He served on the faculties of Central Washington University and Mount Holyoke College. In addition to conducting, he teaches choral literature, choral conducting and applied voice, and is active as a guest conductor, clinician, adjudicator and tenor soloist.

**BAND**

**Dr. Douglas Nimmo** is Professor of Music and Concert Wind Orchestra Conductor at Gustavus Adolphus College. Under his leadership, the Gustavus Wind Orchestra has toured throughout the world and has commissioned several new compositions. He is a frequent guest conductor, a writer, and is a recipient of the Edgar M. Carlson Award for Distinguished Teaching. He holds degrees from the University of Minnesota-Duluth, Vandercook College of Music and Arizona State University.

**A DAY  
IN THE LIFE  
AT LSM**

Your schedule at LSM will vary depending on your instrument and ensemble. You'll be busy, but you'll receive tremendous support from your teachers and plenty of time to build lasting friendships. Here's a sample schedule for an LSM student who plays violin in one large ensemble and plays trumpet in one elective:

- 7:30 am Breakfast
- 8:30 am Morning Prayer and Announcements
- 9:00 am Musicianship or Small Ensemble (*alternating days*)
- 10:00 am Practice
- 11:30 am Lunch
- 1:00 pm Jazz Ensemble (*trumpet*)
- 2:00 pm Orchestra sectional
- 3:15 pm Violin Lesson
- 3:45 pm Recreation Time
- 5:00 pm Dinner
- 6:00 pm Orchestra rehearsal
- 8:00 pm Faculty Artist Recital
- 9:00 pm Evening Prayer
- 9:30 pm Dorm Time
- 11:00 pm Lights Out

Throughout LSM, your schedule varies for field trips to world-class arts organizations, a college fair featuring dozens of Lutheran colleges, local events on the 4th of July, and other special events. During Festival Week your schedule changes to accommodate dozens of recitals, concerts and other events. Parents, grandparents, family, friends and local community members come to campus to celebrate your accomplishments and experience great music.

# FREQUENTLY ASKED QUESTIONS

## IS LSM ONLY FOR LUTHERANS?

Absolutely not! Just over half our students are Lutheran (ELCA, LCMS and more), and those who are not come from more than 20 other denominations and faiths.

## WHERE DO WE LIVE AND EAT?

Gustavus Adolphus is a gorgeous Midwestern campus. All LSM students live in counseling groups in the air-conditioned Southwest Hall dormitory. Gustavus has one of the nation's top-ranked college food services, and you'll choose from a wide variety of foods every day (pizza bar, wrap station, hamburger grill, salad bar and more). Schaefer Fine Arts Center holds practice and rehearsal rooms, teaching studios and recital halls.

## HOW DO I GET THERE?

Since our students come from all over the country and beyond, we provide a shuttle between the Minneapolis/St. Paul airports and the Gustavus Adolphus College campus. LSM counselors meet you at baggage claim and chaperone the shuttle.

## WILL I HAVE ANY FUN?

Definitely! Past LSM students will tell you that LSM was one of the best experiences they've ever had. You'll be immersed in music, but there's also plenty of time for fun and relaxation. Swim in the Gustavus pool, join an organized rec game, watch a movie, or just hang out with friends. You'll have an unforgettable summer.

## WHY SHOULD I CHOOSE LSM?

**A Supportive Community.** You will be musically challenged by our faculty, but you'll also find a nurturing environment. Cut-throat competition is set aside in favor of personal achievement. We are here to celebrate your success and work together to reach musical goals.

**A Superb Pre-College Experience.** Live in a dorm with roommates, turn to a trained counselor who lives right on your floor for advice and ideas, manage your own daily schedule, and still find plenty of time for fun and friendship. LSM is a great glimpse into college life!

**A Center for Performance.** Daily recitals let you experience excellence in performance. Our amazing faculty return year after year because they treasure the opportunity to both teach and perform. You will learn from the outstanding performances you witness, and then you will become the performer in solo, chamber and ensemble settings.

**A National Community.** Our students, faculty and staff come from across the country and around the world. The diversity of our community brings voices and perspectives you will not find with a local or regional program.

**A Faith-Based Experience.** Spiritual growth is encouraged and nurtured at LSM. We intentionally link music and worship to foster a bridge between your spiritual life and your musical life. Morning and Evening Prayer welcome all of us into a community of hope, forgiveness and musical celebration.

## WHAT DOES LSM COST?

We are committed to making LSM accessible to all interested, qualified students. Tuition for LSM 2008 is \$2,995 which includes musical training, performance opportunities, special events and room and board. More than 80% of our students also receive some sort of fee reduction, so be sure to inquire about these opportunities. We offer:

- Need-based financial aid
- Merit-based scholarships
- Church/community grants (we'll match funds you raise up to \$1,500 on a 3-to-1 ratio)
- Transportation grants (for students who travel great distances to get to LSM)



## PERFORM FOR YOUR PARENTS, FAMILY AND FRIENDS!

The final week of LSM is aptly named Festival Week (July 17-20, 2008), as over half of the recitals and concerts occur during this time. Student soloists and chamber groups perform in numerous recitals throughout the day on Thursday, Friday and Saturday, while the band, choir and orchestra each perform a final evening concert. Family and guests can plan a visit to LSM to experience your month's accomplishments. They are also invited to participate in worship and other daily activities.



### THIS SOUNDS GREAT! HOW DO I APPLY?

Visit our website at [www.luthersummermusic.org](http://www.luthersummermusic.org) for a complete application. You'll need to submit:

- A completed application form
- An audition recording (*guidelines by instrument area are available online*)
- A musical recommendation from a music teacher or director
- A personal recommendation from a teacher, pastor or other adult
- A non-refundable \$25 application fee

If you would like to receive a paper copy of the application materials, contact us at 612.879.9555 (toll-free at 888.635.6583). Our mailing address is Lutheran Summer Music, 122 West Franklin Ave. Suite 230, Minneapolis, MN 55404.

612.879.9555

888.635.6583

# LUTHERAN SUMMER MUSIC

ACADEMY & FESTIVAL

FOR BAND, ORCHESTRA, CHOIR AND  
KEYBOARD STUDENTS GRADES 8 TO 12

JUNE 22 TO JULY 20, 2008

ON THE CAMPUS OF GUSTAVUS ADOLPHUS COLLEGE, ST. PETER, MN

[www.lutheransummermusic.org](http://www.lutheransummermusic.org)



LUTHERAN SUMMER MUSIC 122 W. Franklin Avenue, Suite 230 Minneapolis, MN 55404-2451

Photography by Chip Peterson and Katherine U. Singer

NON-PROFIT ORG.  
US POSTAGE  
**PAID**  
MINNEAPOLIS MN  
PERMIT NO 27037