

LUTHERAN
MUSIC
PROGRAM HOME OF THE
LUTHERAN SUMMER MUSIC ACADEMY & FESTIVAL



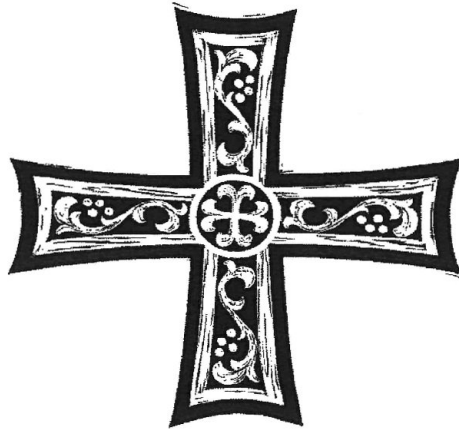
CHRIST
is MADE the SURE
FOUNDATION

HYMN FESTIVAL

Wednesday, 18 July 2012 | Luther College, Decorah, Iowa

LUTHERAN SUMMER MUSIC HYMN FESTIVAL

Wednesday, 18 July 2012, 7:30 PM † Center for Faith and Life, Luther College



So then you are no longer strangers and aliens, but you are citizens with the saints and also members of the household of God, built upon the foundation of the apostles and prophets, with Christ Jesus himself as the cornerstone. In him the whole structure is joined together and grows into a holy temple in the Lord; in whom you also are built together spiritually into a dwelling place for God. (Ephesians 2:19-22)

The Bible is full of vivid images for Jesus—the Good Shepherd, the Bread of Life, the Alpha and Omega, the Light of the World—but perhaps none are as central as the image of Christ as cornerstone of the Church. In fact, the entire New Testament witness invites all people to let their lives be built upon the sure foundation of Jesus Christ.

Tonight's hymn festival explores these varied images through the texts and music that we share. Hymns ancient and new combine with melodies from all times and places to remind us what it means to be a community built on, raised with, and sent out by Christ.

A hymn festival falls somewhere on the spectrum between worship service and sacred concert; to that end, tonight's program will proceed without interruption. However, following the closing hymn you are invited to applaud in appreciation for the students and faculty who have shared their artistic gifts with us this evening.



CHRIST *is* MADE *the* SURE FOUNDATION

PRELUDE

Fantasy on Hyfrydol

Hal H. Hopson (b. 1933)

Salvation Is Created

Pavel Chesnokov (1877-1944)
arr. Bill Ingram

LSM Handbell Choirs

Chorale Prelude on Ein feste Burg, BuxWV 184

Dietrich Buxtehude (1637-1707)

Catherine Rodland, *organ*

✠ BUILT *on* CHRIST ✠

INTROIT

Of the Father's Love Begotten

DIVINUM MYSTERIUM

Choir:

Corde natus ex parentis
ante mundi exordium
A et O cognominatus
ipse fons et clausula
omnium quae sunt, fuerunt,
quaeque post future sunt
saeculorum saeculis.

*Of the Father's love begotten,
ere the worlds began to be,
he is Alpha and Omega,
he the source, the ending, he
of the things that are, that have been,
and that future years shall see
evermore and evermore.*

All:

Oh, that birth forever blessed, when the virgin, full of grace,
by the Holy Ghost conceiving, bore the Savior of our race,
and the babe, the world's redeemer, first revealed his sacred face,
evermore and evermore.

Men:

This is he whom seers in old time chanted of with one accord,
whom the voices of the prophets promised in their faithful word;
now he shines, the long-expected; let creation praise its Lord
evermore and evermore.

Women:

Let the heights of heav'n adore him, angel hosts his praises sing;
pow'rs, dominions, bow before him and extol our God and King;
let no tongue on earth be silent, ev'ry voice in concert ring
evermore and evermore.

All:

Christ, to thee, with God the Father, and, O Holy Ghost, to thee,
hymn and chant and high thanksgiving and unwearied praises be:
honor, glory, and dominion, and eternal victory
evermore and evermore.

Choir: Amen

OPENING HYMN

645: *Christ Is Made the Sure Foundation*

WESTMINSTER ABBEY

All stand and sing:

St. 1 – Unison

St. 2, 3 – Harmony

St. 4 – Unison

COMMENTARY

HYMN

504: *A Mighty Fortress Is Our God*

EIN FESTE BURG

All stand and sing:

St. 1 – Unison

St. 2 – Harmony

St. 3 – Choir

St. 4 – Unison

READING

building on the rock; the virtue of hope

ANTHEM

My Hope Is Built

arr. Zebulon M. Highben

My hope is built on nothing less than Jesus' blood and righteousness;
no merit of my own I claim, but wholly lean on Jesus name.
On Christ, the solid rock, I stand; all other ground is sinking sand.

When darkness veils his lovely face, I rest on his unchanging grace;
in every high and stormy gale my anchor holds within the veil.
On Christ, the solid rock, I stand; all other ground is sinking sand.

His oath, his covenant, his blood sustain me in the raging flood;
when all supports are washed away, he then is all my hope and stay.
On Christ, the solid rock, I stand; all other ground is sinking sand.

When he shall come with trumpet sound, oh, may I then in him be found.
Clothed in his righteousness alone, redeemed to stand before the throne!
On Christ, the solid rock, I stand; all other ground is sinking sand.

✠ DEAD *and* RAISED *with* CHRIST ✠

READING

way, truth, life

HYMN

530: *Here, O Lord, Your Servants Gather*

TOKYO

St. 1 – All

St. 2, 3 – Canon, women begin

St. 4 – All

COMMENTARY

HYMN

349: *Ab, Holy Jesus*

HERZLIEBSTER JESU

St. 1 – Choir

St. 2 – Men

St. 3 – Women

St. 4 – Choir

St. 5 – All

READING

united with Christ

HYMN

To Christ Belong

WONDERS

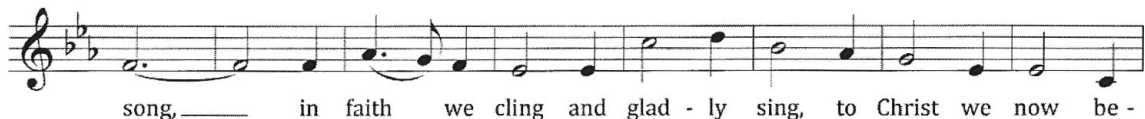
Choir:

To Christ belong, in Christ behold God's wonders still unfold;
the buried grain springs forth again with fruit one hundredfold.
Baptized into the death of Christ, with Christ from death we rise,
drawn through the night by dawning light into abundant life.

The brooding Spirit moves unseen as living waters stream
to quench all thirst and bring to birth a new community.

The binding shroud is here released, the veil of sin and grief,
and in their place a wreath of grace and robes of joy and peace.

All:



long. In Christ a - bide, in Christ be - hold the world be - loved and
whole. In love re - main, by love pro - claim God's won - ders
still un - told, God's won - ders still un - told.

COMMENTARY

HYMN

449: *We Know That Christ Is Raised*

ENGELBERG

All stand and sing:

St. 1-4 – All

✠ SENT *by* CHRIST ✠

ANTHEM

Offertory

John Ness Beck

With what shall I come before the Lord and bow myself before God on high?
Shall I come before him with burnt offerings?
Shall I come before him with yearling calves?

Will the Lord be pleased with thousands of rams, with ten thousand rivers of oil?
Shall I give my firstborn for my transgressions, the fruit of my body for the sin of my soul?

He has told you, O mortal, he has told you what is good.
And what does the Lord require of you but to do justice,
and to love kindness, and to walk humbly with your God?

COMMENTARY

HYMN

583: *Take My Life, That I May Be*

TOMA MI VOLUNTAD

Refrain – Choir, in Spanish

Refrain and stanzas – All, in English

HYMN

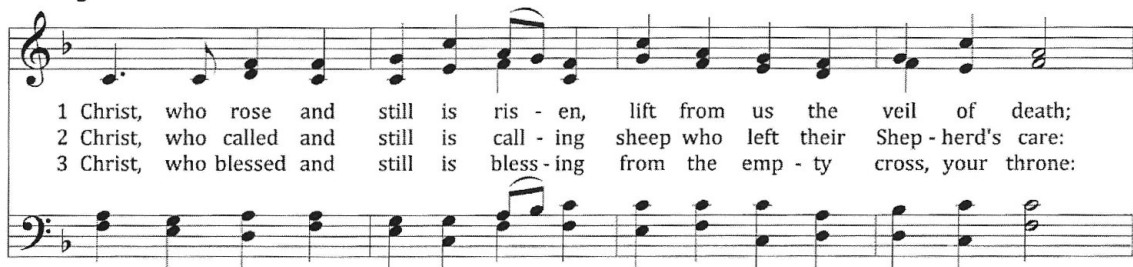
Christ, Who Rose and Still Is Risen

LEVEL GREEN

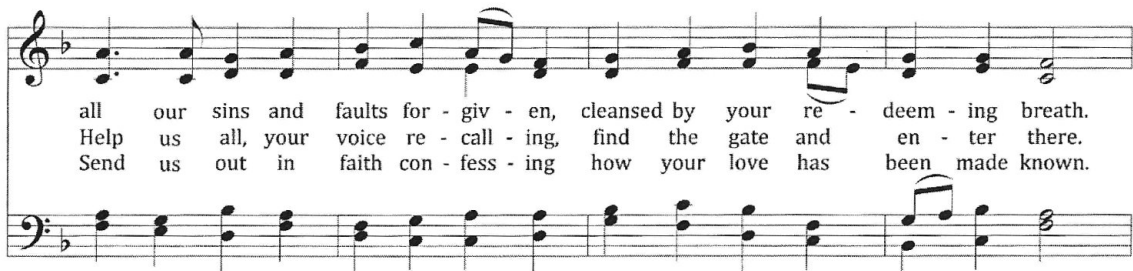
St. 1 – Unison

St. 2 – Harmony

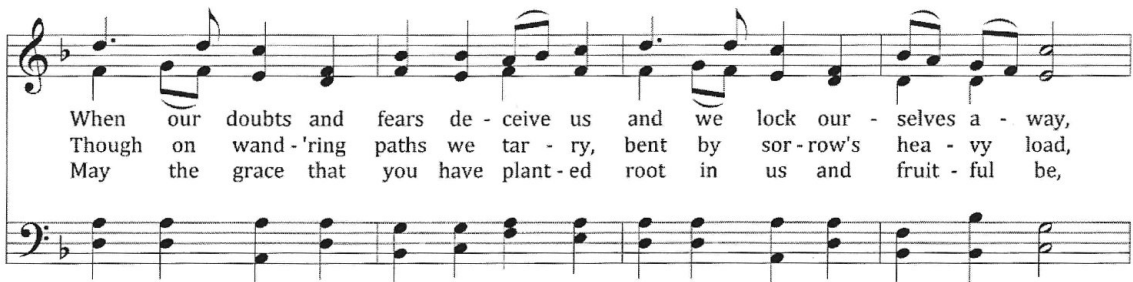
St. 3 – Unison



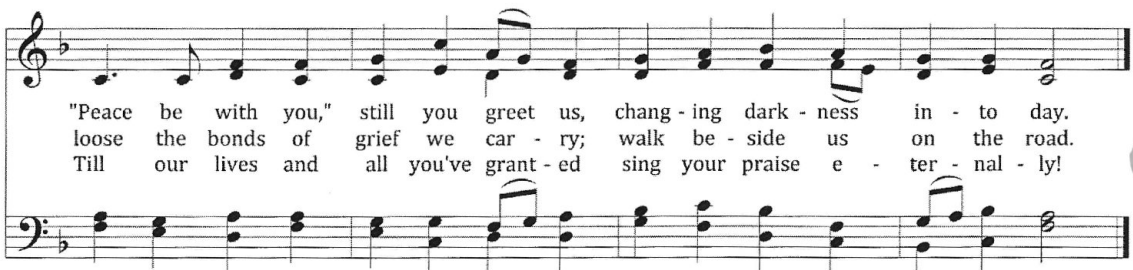
1 Christ, who rose and still is ris - en, lift from us the veil of death;
 2 Christ, who called and still is call - ing sheep who left their Shep - herd's care:
 3 Christ, who blessed and still is bless - ing from the emp - ty cross, your throne:



all our sins and faults for - giv - en, cleansed by your re - deem - ing breath.
 Help us all, your voice re - call - ing, find the gate and en - ter there.
 Send us out in faith con - fess - ing how your love has been made known.



When our doubts and fears de - ceive us and we lock our - selves a - way,
 Though on wand - 'ring paths we tar - ry, bent by sor - row's hea - vy load,
 May the grace that you have plant - ed root in us and fruit - ful be,

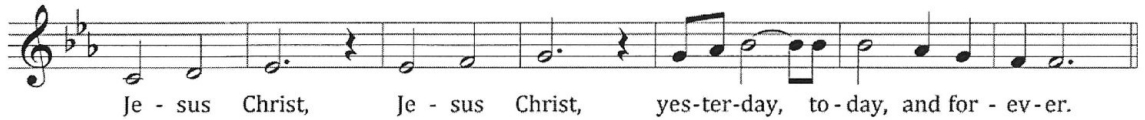


"Peace be with you," still you greet us, chang - ing dark - ness in - to day.
 loose the bonds of grief we car - ry; walk be - side us on the road.
 Till our lives and all you've grant - ed sing your praise e - ter - nal - ly!

COMMENTARY

PRAYERS

The prayer refrain is introduced by the choir, then sung continuously by all:



Sung by the choir:

O radiant light, O Sun divine of our God's deathless face...

You are our Way and our Truth; you are our Life...

At morning we praise you, ever-living Lord...

At the light of eventide we joy in your presence...

Jesus, compassionate one, hope for the oppressed...

You are Alpha and Omega; you are Savior and friend...

Image of Light sublime that fills the heavenly dwelling place...

You are Alpha and Omega; you are ever Savior and friend,
yesterday, today, and forever. Forever.

BENEDICTION

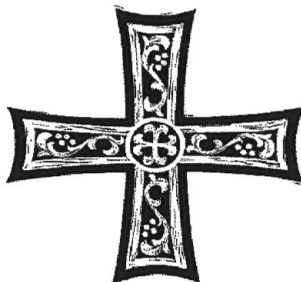
CLOSING HYMN

765: *Lord of All Hopefulness*

SLANE

All stand and sing:

St. 1-4 – All



LEADERS & PARTICIPANTS

Commentary

Wayne Weissenbuehler (*The Phyllis & Richard Duesenberg Endowed Chaplain Chair*) is a retired pastor and former bishop of the ELCA's Rocky Mountain Synod, was a longtime contributor to *The Lutheran* magazine, and an adjunct faculty member at Wartburg Seminary. He currently serves as pastor of Faith Lutheran Church in Burlington, IA, where his wife, Pastor Susanne Smith, also serves an ELCA congregation. They are fast becoming acclimated to life on the Mississippi River. This year marks Weissenbuehler's fourth summer serving as chaplain for Lutheran Summer Music.

Organ

Catherine Rodland (*The Regina Holmen Fryxell & Patricia Schad Leege Endowed Chapel Organist*), whose playing has been described as "transcendent" (*The American Organist*), is artist in residence at St. Olaf College. She received her B.M. from St. Olaf College, and her M.M. and D.M.A. from Eastman School of Music where she was a student of Russell Saunders. At Eastman, Rodland received the prestigious Performer's Certificate and the Ann Anway Award for excellence in organ performance. She is a prizewinner in several competitions including the 1994 and 1998 American Guild of Organists Young Artists Competitions, and maintains an active career as a recitalist.

Chapel Choir

Zebulon M. Highben (*The Paul Bouman Chapel Choir Director*) is a conductor, composer, and church musician. Recently appointed Director of Choral Activities at Muskingum University in New Concord, OH, he previously taught at Luther Seminary and the University of Wisconsin River Falls. Highben's compositions and arrangements are widely published and performed, garnering awards from the American Composers Forum and the Association of Lutheran Church Musicians. Highben studied at The Ohio State University (B.M.E.), Luther Seminary and St. Olaf College (M.S.M.), and holds the D.M.A. in conducting from Michigan State University. He has served on the LSM faculty since 2005.

Handbell Choir

Jeffrey Scott Doebler serves as professor of music and director of music education and bands at Valparaiso University. He has been conducting handbell choirs for nearly 25 years. Doebler founded the LSM Handbell Choir in 1996 at Luther College. He also founded church handbell choirs in Valparaiso, IN, and Shakopee, MN, and re-founded the handbell choir at Valparaiso University. Doebler holds music education degrees from Luther College (B.A.), Valparaiso University (M.M.), and the University of Minnesota (Ph.D.). He has served Lutheran Summer Music as concert band conductor, handbell choir conductor, summer program director, and faculty affairs coordinator.

LEADERS & PARTICIPANTS

Flute	Suzanne Ernst
Clarinet	Lori Baruth
Bassoon	David Oyen
Trumpet	Ashley Hall Emily Young
Horn	Bruce Atwell
Trombone	Dylan Chmura-Moore
Tuba	Stephanie Frye
Percussion	Meggie Aube John Posth, Melanie Szyperski, Colin Tobin
Violin	Caroline Nordlund
Piano	Dwight Weaver
Worship Assistants	Karl Robson Amanda Highben

2012 Lutheran Summer Music Handbell Choir

Jeffrey Scott Doebler, *Conductor*
Carl Colvin, *Handbells intern*

Amber Aarsvold	Tiller Martin
Meggie Aube*	Jasmine McCormick
Amber Barth	Isabel Nord
Kristina Butler	Leah Richardt
Carl Colvin +	Kasey Shultz
Karin Dye	Shannon Taylor
Elizabeth Frakes	Cady Thomas
Stephanie Frye*	Drew Titcombe
Quinn Gingrich	Amy Wagenaar
Sarah Gruendler	Della Woon
Megan Gruenwald	

* *faculty/staff*

+ *intern*

2012 Lutheran Summer Music Chapel Choir

Zebulon M. Highben, *The Paul Bouman Chapel Choir Director*

Dwight Weaver, *Chapel Choir intern*

Soprano

Kaitlyn Ahlschwede
Amber Barth
Krista Botting
Kristina Butler
Lauren Doxsee
Karin Dye
Stefanie Fiser*
Sarah Gruendler
Krista Hastings
Molly Hennig
Anika Hodel
Margaret Jacobson
Brianna Keith
Cadence Klemp
Meredith Locke
Carlie Mueller
Margaret Mueller
Meggan Muhle
Alma Neuhaus
Isabel Nord
Matthew Olmstead
Elise Sanneman
Lexie Schroeder
Kayleigh Shaffer
Emily Sievert
Melanie Szyperski
Shannon Taylor
Rosa Theaker
Cady Thomas
Reed Thomas
Amanda Tomkins
Marie Van Buskirk
Mikayla Whitten

Alto

Amber Aarsvold
Olivia Arco
Hannah Bjornstad
Samantha Bessey
Kierra Blackstad
Lillian Brondyke
Emily Brown
Anatalie Dantes
Marissa Eckberg
Elizabeth Frakes
Heather Gillis
Rachel Guptill*
Claudia Holen
Hannah Johnsrud
Leah Jorgensen
Rebecca Keller
Sarah Koopmann
Jocelyn Morris
Callie Nitz
Shannon O'Brien
Eva Peterson
Emily Robinson
Elizabeth Shoemaker
Kasey Shultz
Chelsea Storms
Megan Susuico
Naomi Terpening
Faye Titcombe
Mary-Ellen Tolliver*
Amy Wagenaar

Tenor

Alex Arensmeier
Joshua Brumm
Joe Cowan
Timothy Kramer
Matthew Lydick
Steven Pfahning
Tony Sanders*
Jacob Shaffer
Aaron Suarez
Kenneth Wicklund
Dwight Weaver +

Baritone/Bass

Matt Axdal
Aniello Barone
Samuel Bullert
Nate Carpenter
August Denys
Isaac Drewes
Quinn Gingrich
Tyler Holle +
Benjamin Kerswell
Jonathan Kobs
Tiller Martin
Jordan McCreary
Mark Mockett
Eric Mueller
Antonio Patrick
John Posth
William Radford
Jacob Schwartz
Drew Titcombe
Colin Tobin
Jacob Wesemann

* *faculty/staff*

+ *intern*

SOURCES: HYMNS & MUSIC

Of The Father's Love Begotten | Text: Marcus Aurelius Clemens Prudentius (348-413); composite translation | Tune: DIVINUM MYSTERIUM, Plainsong mode V, 13th century

Christ Is Made the Sure Foundation | Text: Latin hymn, ca. 7th century; *translated by* John Mason Neale (1818-1866), *alt.* | Music: WESTMINSTER ABBEY, Henry Purcell (1659-1695); *arranged by* Ernest Hawkins (1802-1868) and Robert J. Powell | GIA Publications, G-5827

A Mighty Fortress Is Our God | Text: Martin Luther (1483-1546); *Lutheran Book of Worship* translation | Music: EIN FESTE BURG, Martin Luther; *arranged by* David Cherwien (b. 1957) | Lorenz Publishing Company, AM2010

My Hope Is Built | Text: Edward Mote (1797-1874), *alt.* | Music: SOLID ROCK, William Bradbury (1816-1868); *arranged by* Zebulon M. Highben (b. 1979) | *for the 2012 Lutheran Summer Music Academy and Festival and gratefully dedicated to our Chaplain, Wayne Weissenbuehler*

Here, O Lord, Your Servants Gather | Text: Tokuo Yamaguchi (1900-1995); *translated by* Everett M. Stowe | Music: TOKYO, Japanese Gagaku mode; Isao Koizumi (1907-1992)

Ah, Holy Jesus | Text: Johann Heermann (1585-1647); *translated by* Robert Bridges (1844-1930), *alt.* | Music: HERZLIEBSTER JESU, Johann Crüger (1598-1662); *arranged by* John Ferguson (b. 1941) | Augsburg Fortress, 9786000175535

To Christ Belong | Text: Susan R. Briehl (b. 1952) | Music: WONDERS, Robert Buckley Farlee (b. 1950) | *in honor of the 100th anniversary of Christ Church Lutheran, Minneapolis* | Augsburg Fortress, 9781451420791 | © 2011 Augsburg Fortress; reprinted by permission

We Know That Christ Is Raised | Text: John B. Geyer (b. 1932) | Music: ENGELBERG, Charles Villier Stanford (1852-1924); *arranged by* Jeremy J. Bankson (b. 1975) | MorningStar Music, MSM-20-448

Offertory | Text: Micah 6:6-8 | Music: John Ness Beck (1930-1987) | *for the First Presbyterian Church, Carrollton, Ohio, in memory of Frank and Dorothy Wagner* | Beckenhorst Press, BP1280

Take My Life, That I May Be | Text: Frances R. Havergal (1836-1879) and Vicente Mendoza (1875-1955) | Music: William Dexheimer Pharris (b. 1956); *arranged by* Mark Sedio (b. 1954) | Augsburg Fortress, 9780800658298

Christ, Who Rose and Still Is Risen | Text: Zebulon M. Highben | Music: LEVEL GREEN, Zebulon M. Highben | *Commissioned for First Presbyterian Church, Fargo, ND, and Trinity Lutheran Church, Moorhead, MN, through the American Composers Forum's Faith Partners Program with funds provided by the Otto Bremer Foundation* | © 2012 Z.M.H.; reprinted by permission

Gathering Song and Eucharistic Acclamations ("Jesus Christ, Yesterday, Today, and Forever") | Text: Suzanne Toolan, SM (b. 1927), *after* Hebrews 13:8 and Revelation | Music: Suzanne Toolan, SM | *for the gathering of the people of San Francisco and northern California on the occasion of the Papal Visit, Candlestick Park, September 18, 1987* | GIA Publications, G-3168 | © 1988 GIA, reprinted by permission

Lord of All Hopefulness | Text: Jan Struther (1901-1953) | Music: SLANE, Irish traditional, *arranged by* Thomas Pavlechko (b. 1962), *adapted/expanded by* Zebulon M. Highben

SOURCES: READINGS

Opening narration: Adapted from John 1 and Hebrews 13:8 | building on the Rock: Matthew 7:24-27 | the virtue of hope: from Mere Christianity, C. S. Lewis (1898-1963) | Way, Truth, and Life: John 14:1-6a | united with Christ: Romans 6:1-5 | go and bear fruit: John 15:5, 16-17 | "What we call the beginning is often the end": from Little Gidding, T. S. Elliot (1888-1965)

ACKNOWLEDGEMENTS

We gratefully acknowledge the sponsors of this evening's program:

David & Patricia Leege *in memory of Paul Manz*

Nancy Tagge *in memory of Clara Kiekhaefer*

We also thank the sponsor of this year's Church Music elective:

Robin High *in memory of Lloyd High and in honor of Jean High*

Musical scores were loaned to LSM for the Chapel Choir's use by the following institutions:

Luther College, Decorah, Iowa

Luther Seminary, Saint Paul, Minnesota

First Presbyterian Church, Lansing, Michigan

Westwood Lutheran Church, Saint Louis Park, Minnesota

Instruments, musical scores, and supplies were loaned to LSM for the Handbell Choir's use by:

Luther College, Decorah, Iowa

Valparaiso University, Valparaiso, Indiana

Trinity Lutheran Church, Valparaiso, Indiana

For their gracious and constant hospitality, we also thank:

Luther College, Decorah, Iowa

Kendall Thompson & Paul Ludwig

*We ask that all members of the audience refrain from photographing or recording the performance.
A high-fidelity CD recording of this event may be ordered; an order form will be available
following the performance.*

Please be sure that all cell phones, beepers, alarms, and similar devices are turned off.

You are invited to attend the upcoming events of the
Lutheran Summer Music Concert & Recital Series:

Festival Band Concert
Center for Faith and Life
Thursday, July 19, 2012
7:00 PM

Festival Choir Concert
Center for Faith and Life
Friday, July 20, 2012
7:00 PM

Festival Orchestra Concert
Center for Faith and Life
Saturday, July 21, 2012
7:00 PM

You are also invited to join us for closing worship:

Festival Closing Worship
Center for Faith and Life
Sunday, July 22, 2012
8:30 AM *Porch Brass*
9:00 AM *Service of Holy Communion*